



Innovation in every connection.

Single & Three Phase Distribution

Issue 1

Elucian® Single & Three Phase solutions.
An extensive range of consumer units and
protection devices, packed with advanced
features for safety, flexibility, and reliability.



Elucian® by Click® brings to market a comprehensive Consumer Unit and Circuit Protection range.

Get to know us



Designed with installers in mind

Through close collaboration with contractors and installers, our product range has been tailored to meet industry needs while ensuring full compliance with the latest regulations.

Designed with the installer in mind, Elucian® is an extensive range of plastic consumer units that covers a broad range of installations and offers a number of features and benefits that will enhance the products' convenience, flexibility and safety properties.



Contents

- 02 Our Promise
- 04 Keeping up with the Regulations
- 06 Overload Protection of RCCBs
- 10 Increase Protection with AFDDs
- 12 Safeguard your installations with Surge Protection
- 14 Single Phase Consumer Units
- 26 Protection Devices
- 40 Three Phase Boards
- 52 Three Phase Protection Devices
- 72 Complete the Installation

Reliable Consumer Units & Circuit Protection for safe and easy installations.



Precision manufacturing for reliability and safety.

Safety First 

At Elucian®, precision manufacturing is at the core of our commitment to reliability and safety. Our Three Phase Distribution Boards are meticulously designed and engineered to deliver consistent, high-performance results, making them a trusted choice for professionals. Each board undergoes rigorous testing to meet and exceed I.S EN 61439-3 standards, ensuring compliance with safety, durability, and functionality requirements. This thorough process guarantees that our products provide dependable, long-lasting solutions for even the most demanding electrical installations, offering peace of mind to installers and end-users alike.

Unbeatable Quality 

Uncompromising quality you can trust.

Elucian® products are crafted with a commitment to exceptional quality. We use only the finest materials and subject every product to rigorous testing to ensure they meet and exceed industry standards. This dedication to excellence guarantees reliable, durable, and safe solutions for all your electrical installations.



Endless Support 

Technical support when you need it.

Our in-house Scolmore® Group technical support team is here to assist with all your queries, offering expert advice and guidance. For additional information and support, visit our website to access helpful resources and solutions.



The Elucian® consumer units range has been designed to ensure compliance with I.S.10101.

Our engineers have considered how installers need to comply with the Irish wiring regulations when installing consumer units in properties across Ireland. The Elucian® range has comprehensive options for every installation. These consist of Main Switch units, RCBO units, Split Load units and our Combination units.

Explore Three Phase

Explore our full range of Three Phase Distribution Boards, Circuit Protection Devices and accessories.



Three Phase on [Page 41](#)



Overload Protection

(536.4.3.2)

RCCBs are not designed to be able to withstand overload current. Care should be given when assessing the likely loading of the final circuits.

The designer and installer must therefore select the correct rated device from the options we have made available; 63A, 80A or 100A. To make this process easier we have installed 80A devices as standard.

Types of RCD

(531.3.3)

Many different types of RCD exist. I.S.10101 recognises Types AC, A, F and B. Currently AC RCDs are recognised as acceptable for general purpose. However, if the installation has any DC components or frequency alterations due to connected loads one of the other types must be selected.

As most installations in Ireland now have some DC components, Type A RCDs are the basic type of device selected for use.

Where higher frequencies exist, or where larger DC components exist, Type F or Type B RCDs should be selected for use. Furthermore, there are several specific requirements in I.S.10101 where either Type F or Type B devices are necessary.

Over-voltage Protection

(Section 443) & (Section 534)

SPDs offer very effective protection against over-voltage. Section 443 covers the requirements for consideration when selecting SPDs in the electrical system.

Section 534 confirms what SPDs are required and where they must be installed within the electrical system.

We have designed our SPD consumer unit to incorporate a type 2 device. These devices offer protection from man-made over-voltages or lightning strokes within the vicinity of the installation.

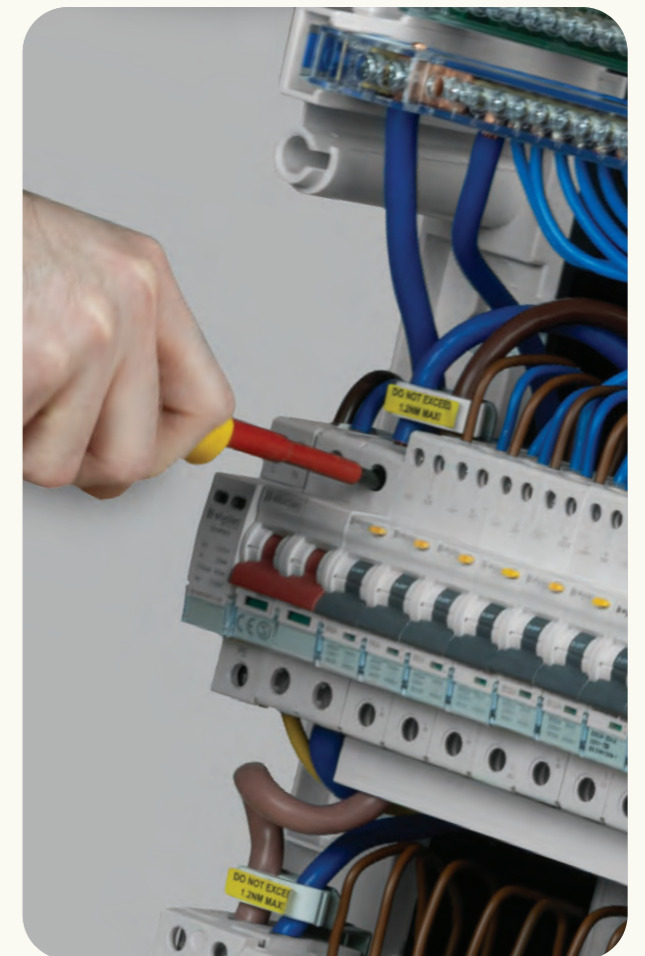
Having SPDs installed adjacent to the main switch allows for compliance with the maximum cable length from the SPD to Earth.

Division of Installation

(Section 314)

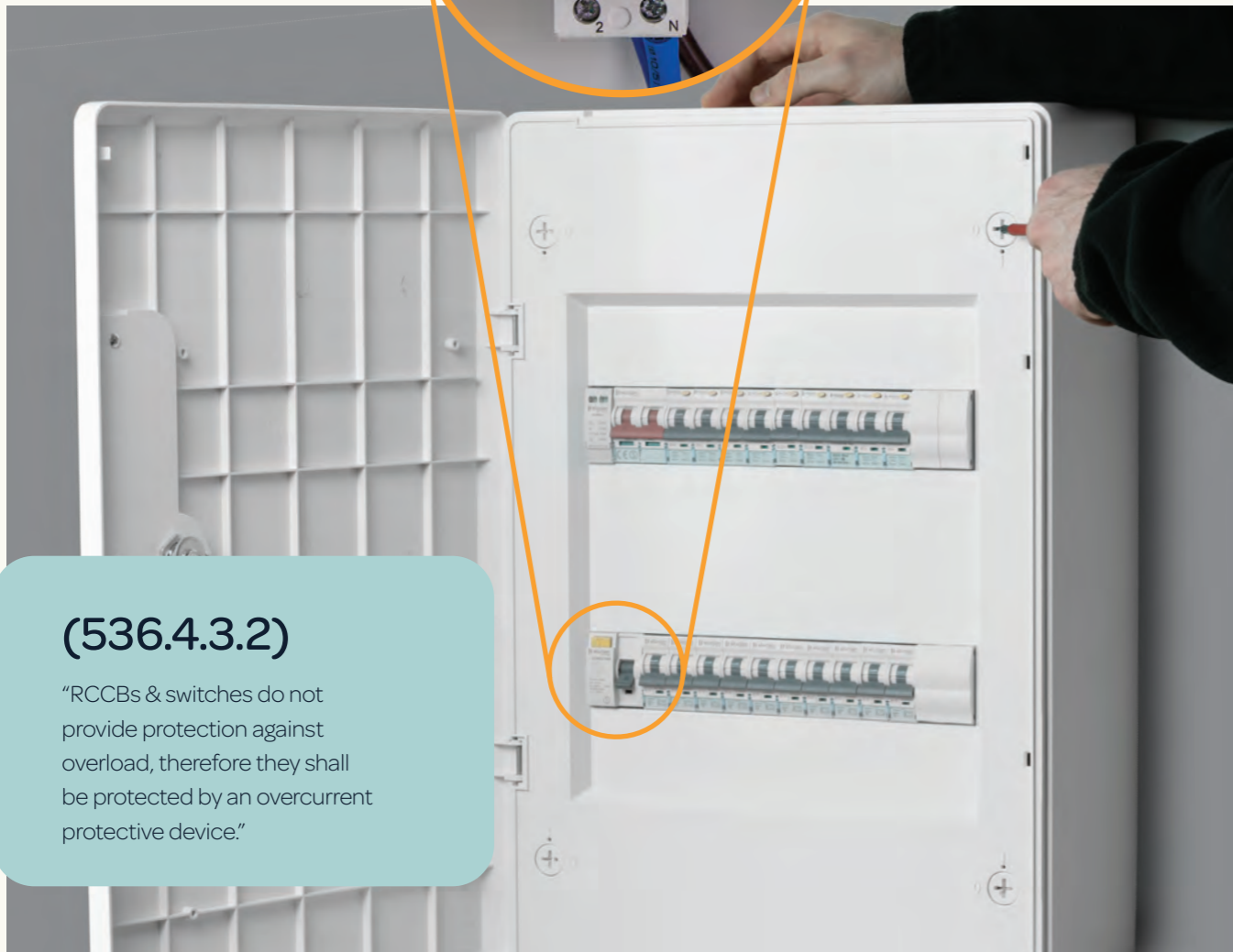
This regulation set requires the designer and installer to ensure the installation is divided up as necessary to:

- (i) Avoid danger and minimise inconvenience in the event of a fault.
- (ii) Facilitate safe inspection, testing & maintenance.
- (iii) Take account of hazards that may arise from the failure of a single circuit.
- (iv) Reduce the possibility of unwanted tripping of RCDs due to excessive protective conductor current or due to fault.
- (v) Mitigate the effects of electromagnetic disturbances.
- (vi) Prevent the indirect energization of a circuit intended to be isolated.



Overload protection of RCCBs...

These devices may be overloaded if the combined outgoing current from the final circuits is greater than the rating of the RCCB. Therefore, we provide an 80A device as standard with the ability to change this to a 100A, or reduce to a 63A if required.



(536.4.3.2)

“RCCBs & switches do not provide protection against overload, therefore they shall be protected by an overcurrent protective device.”

Comply with the regs...

Regulation 536.4.3.2 require the designer to understand the loading profile of the RCCBs within the consumer unit. RCCBs will protect a number of outgoing circuits at the same time.

Method 1

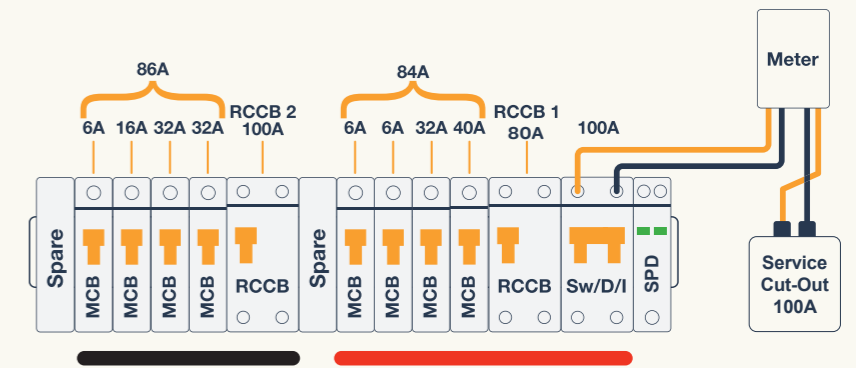
Ensure the full load of all final circuits being protected are less than the rating of the RCCB. The installer will need to consider diversity for the final circuits but, not use diversity as the sole factor for calculating the total current downstream of the device.

Method 2

Ensure the main protective device is of a size to limit the total amount of amps upstream of the devices.

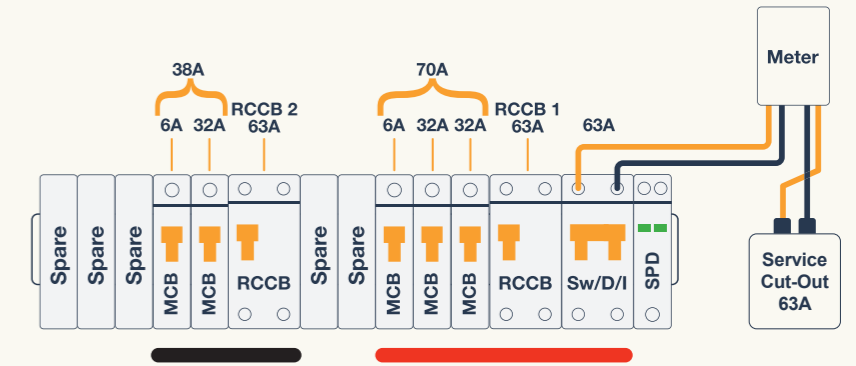
Example 1:

This install would not comply. RCCB1 could be subject to overload.



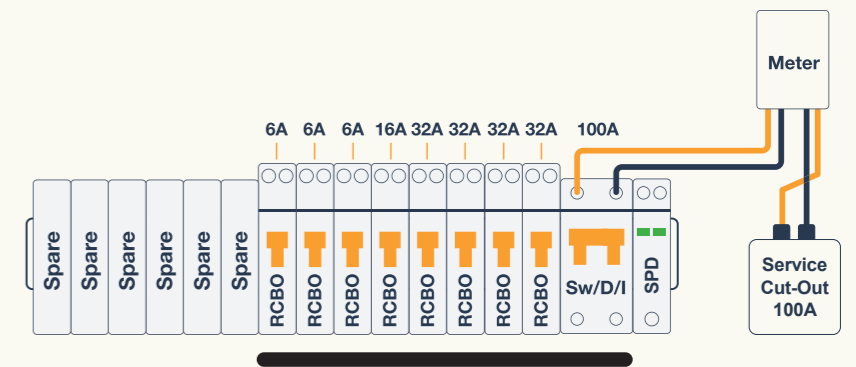
Example 2:

This installation would comply. Although RCCB1 could potentially become overloaded, the protective device at the origin would offer overload protection.



Example 3:

RCBOs offer comprehensive protection as each device is rated to the circuit.



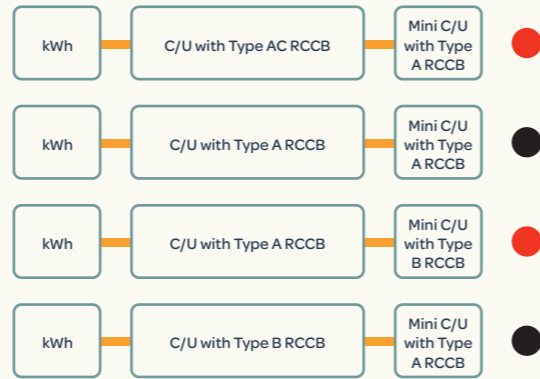
RCCB & RCBO Protection Devices...

RCCBs are available in a number of common types; AC, A, F or B. Dependant on the characteristics of the final circuit/s being controlled, the type of RCCB selected is very important. If it is believed DC current could be present in the protected circuit/s due to the equipment connected, the designer should select a device capable of working with that DC current present.

General RCCBs are designed to operate instantaneously without intentional delay; because of this they are not designed to discriminate in the event of a fault. Therefore, if two general RCCBs were to be installed in series, both may operate when a fault presents itself. To avoid this, selectivity is essential between the installed devices to reduce the unintentional operation of a device upstream from the leakage to Earth.

Installing the correct type of device is essential if it is believed DC current could be present within the installation. It is important to install an RCD type that is capable of handling DC current ahead of a device that isn't able to operate with these currents.

Such as:



Type A RCCB



In today's installations the majority of equipment does have some residual DC current due to the internal electronics. The magnitude of this current can have a detrimental effect on the effectiveness of the protective device.

Type A devices have the ability to continue to work with up to 6mA of DC fault current present. This amount of fault current has been shown to stop AC Type RCCBs/RCBOs from working within the maximum time permitted in I.S.10101.

Type AC RCDs should not be installed in new installations.

RCCB - Residual Current Operated Circuit Breaker, without integrated overcurrent protection.

Full listings **Page 29**



RCBO Protection

These devices combine the functionality of an MCB and RCCB into one single device/module. Available as a Type A RCD with different inrush curve types B or C, these protection devices have been miniaturised to maximise the available space above for termination or final circuits.

The Neutral fly lead has been made long enough to ensure safe connection to the dedicated Neutral bars.

RCBO - Residual Current Operated Circuit Breaker, with integrated overcurrent protection.

Full listings **Page 31**



Safeguard your installations with Surge Protection.

I_{imp} - Impulse current of 10/350 μ s waveform.

I_n - Surge current of 8/20 μ s waveform associated with Type 2 SPDs.

U_p - The residual voltage that is measured across the terminal of the SPD when I_n is applied.

U_c - The maximum voltage which may be continuously applied to the SPD without it conducting.

I_{max} - Maximum short circuit current of the device.

Full listings **Page 28**



Transient Over-voltages

Many installations across Ireland have electronic components within them. Surge protection will offer those devices and appliances protection from over-voltage.

Products such as computers, printers, flat screen televisions, alarms, microwaves and washing machines are commonplace. These can all be vulnerable to transient over voltages, which can significantly reduce the equipment's lifespan through degradation and damage.

A transient over voltage or surge is a short duration increase in voltage measured between two or more conductors. In short, this means anything from microseconds (millionths of a second) to a few milliseconds (thousandths of a second) in duration.

Covers Overvoltage Control (443.4)

Protection against overvoltages shall be provided where the consequence caused by overvoltage could:

- (i) Result in serious injury to, or loss of, human life,
- (ii) Result in significant damage to public services and cultural heritage

For all other cases, a risk assessment shall be performed in order to determine if such protection is required.

Protection against overvoltages shall be considered in the case of equipment likely to produce switching overvoltages or disturbances exceeding the values according to the voltage category of the installation, e.g. where an LV generator supplies the installation or where inductive or capacitive loads (e.g. motors, transformers, capacitor banks) storage units or high-current loads are installed.



Type 1+2 & 2 SPDs

We offer a range of Type 1+2 and 2 Surge Protective Devices designed to safeguard electrical systems from transient overvoltages caused by lightning strokes and power surges. These devices ensure reliable protection for both residential and commercial installations.

SPD listing **Page 28**



Consumer Units

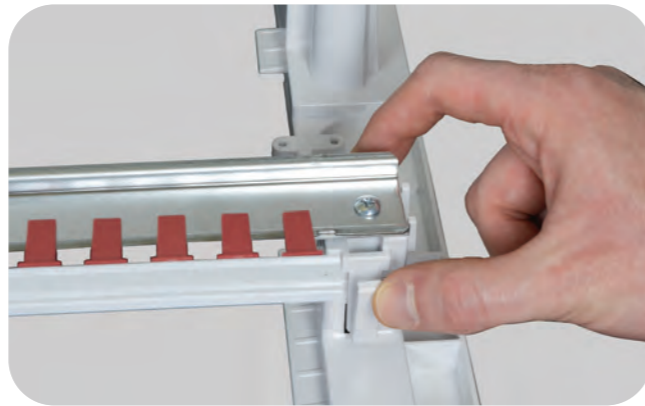
Features & Benefits

Our Elucian® range of consumer units provides an exceptional option for any residential or light commercial environment. Packed with features making installation quick and simple for electricians, with a clear labelling kit for easy identification for the customer. A great range of configurations and sizes makes Elucian® perfect for any installation requirement.



Safe & Hardwearing Plastic Consumer Units

Fire-resistant plastic housings rated UL94-V0, providing enhanced safety and durability. This high-grade material significantly reduces the risk of fire spread in the event of overheating or electrical faults, offering greater protection for both the installation and surrounding environment. Its robust construction also ensures long-lasting performance in demanding conditions.



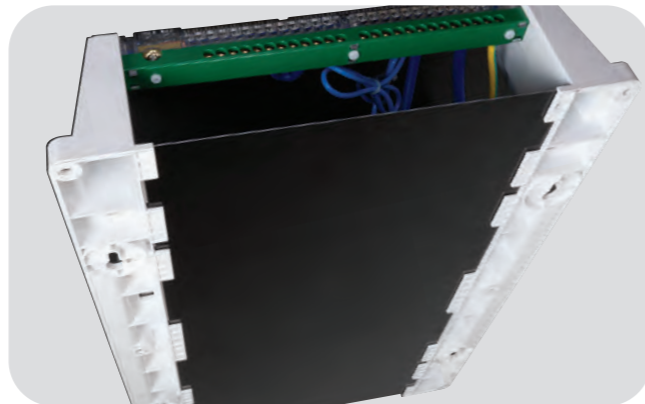
Removeable DIN Rail & Positioning guides

A fast release removeable DIN Rail with no need for tools, allows for ease of installation. Positioning guides ensure devices are installed correctly every time. There is an additional DIN rail included to provide flexibility, allowing you to add more circuits if the main DIN rail reaches capacity.



Innovative Rotatable Covers

The combined, rotatable door and front cover allow for flexible installation in tight spaces, making access easy regardless of positioning. Quarter-turn retainable screws enable quick, tool-free securing of the cover, while the integrated handle lock adds an extra layer of safety and security to the installation.



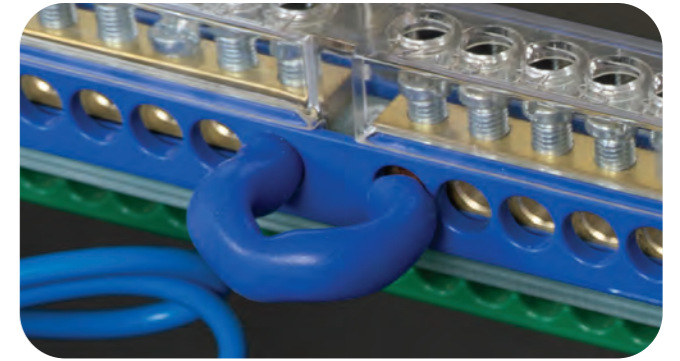
Removable Back Plate

A removable back plate simplifies installation by making it easier to mark and cut the back board before fitting. This saves time on site and allows for a cleaner, more precise setup.

100A

100A Plastic Consumer Units

Each consumer unit is split load and rated 100A



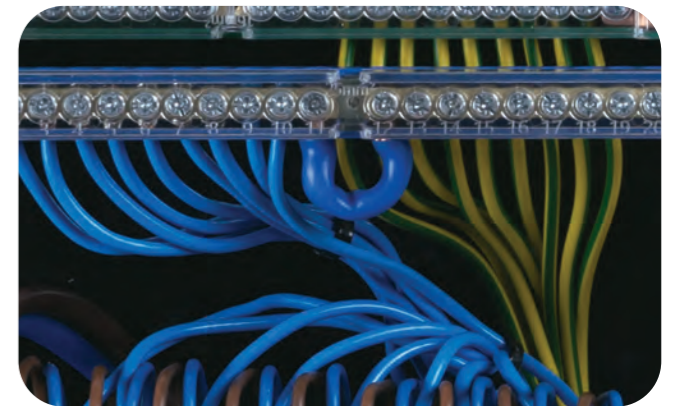
Fully Configurable Boards

By removing the neutral cable the boards can be adapted into fully configurable boards.



Mains Switch Tail Clamp

Each consumer and mini unit come supplied and pre-fitted with a Mains Switch Tail Clamp for added stress relief to ensure the Mains Tail terminations do not come loose and to help fix the Mains Switch Isolator more securely to prevent any rocking or movement. The Mains Switch Tail Clamp will accept a maximum of 25mm² double insulated tails.



Large Space for Wiring

Generous wiring space between and behind devices, making installations quicker, tidier, and easier to manage. This added room supports the growing number of circuits and larger cables often required in modern setups, helping ensure a neat, compliant, and future-proof installation.



Moveable Earth & Neutral Bars

Flexibility and ease of installation with 16mm², 25mm², and 35mm² terminals, catering to a wide range of cable sizes. The busbars can be easily released using the cabinet key, simplifying maintenance and configuration. The moveable earth and neutral terminals allow installers to adapt the layout to suit specific wiring needs.



Accessories Pack

Contains a Sticker Set for clear circuit identification and caution warnings, Grommet Knockout Strips, 2 x Blank Modules, a detailed instruction sheet for all recommended installation details and a Live Busbar, Cover and Caps for added insulation and installation completion.

Take a look inside our Single Phase Boards.

1 Fire Resistant Enclosures

Fire-resistant plastic housings rated UL94-V0, providing enhanced safety and durability. This high-grade material significantly reduces the risk of fire spread in the event of overheating or electrical faults, offering greater protection for both the installation and surrounding environment. Its robust construction also ensures long-lasting performance in demanding conditions.

2 Moveable Earth & Neutral Bars

Flexibility and ease of installation with 16mm², 25mm², and 35mm² terminals, catering to a wide range of cable sizes. The busbars can be easily released using the cabinet key, simplifying maintenance and configuration. The moveable earth and neutral terminals allow installers to adapt the layout to suit specific wiring needs.

3 Torque Rating Label

There is a handy Torque rating label inside every consumer unit, allowing you to make all terminations with ease.

4 Large Space for Wiring

Generous wiring space between and behind devices, making installations quicker, tidier, and easier to manage. This added room supports the growing number of circuits and larger cables often required in modern setups, helping ensure a neat, compliant, and future-proof installation.

5 Removeable DIN Rail & Positioning guides

A fast release removeable DIN Rail with no need for tools, allows for ease of installation. Positioning guides ensure devices are installed correctly every time.

6 MCB Style Solid Blanks

These are DIN Rail mountable and can only be removed when the cover is removed, thus providing additional safety. Other types of blanks can easily fall out or become dislodged.

7 Trunking Guide

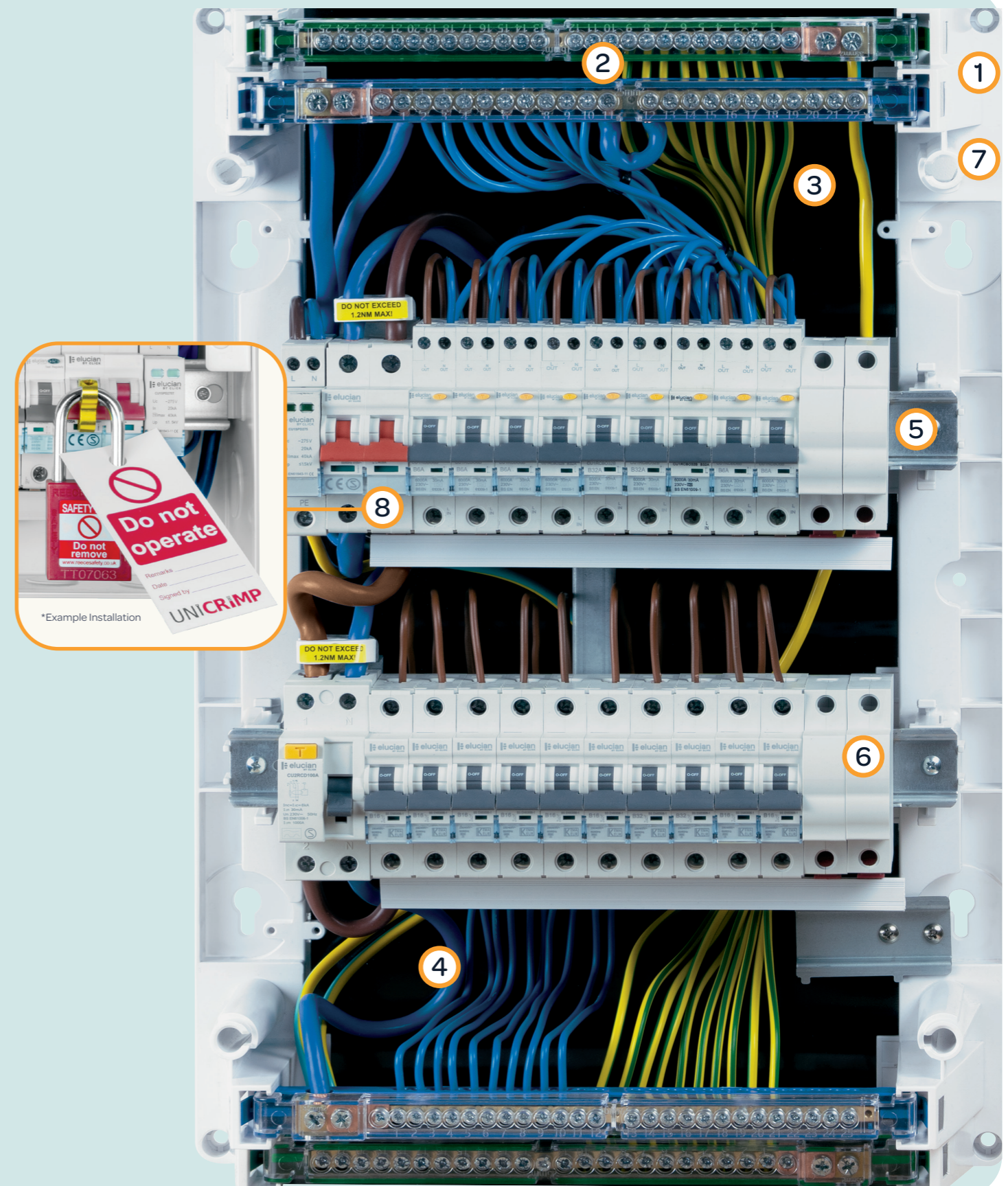
Faster and more accurate installations by providing clear reference points for trunking alignment. Minimising guesswork and saving time on site, it supports professional results while helping meet industry standards for safe and tidy cable management.

8 Lock Off Capabilities

Lockout devices are designed to attach to the moving part of the protective device, usually a switch toggle (rocker switch) which moves from the on to off position.

9 Compact RCBOs (not shown)

The latest design in compact RCBOs leaves more than sufficient space for cabling and terminating.





Unpopulated Consumer Units (Split Load)

A range of unpopulated Elucian® Plastic consumer units ideal for those projects that need custom configuration without limitations on module placement.

3YR

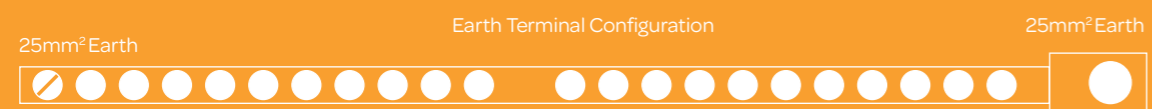
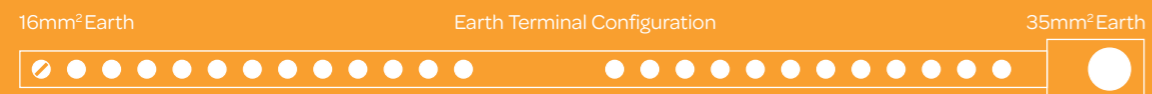
3 Year
Warranty



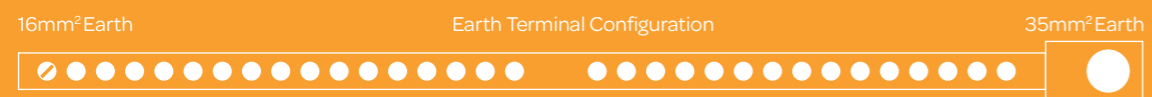
Tail Clamp
Pre-Installed

Terminal Layouts...

CUPEB28, CUPEB42



CUPEB36, CUPEB54



*Example shown - CUPEB36

| Product SKU | Description | Dimensions (mm) |
|-------------|--|-----------------------------|
| CUPEB28 | 28 Way Plastic Consumer Unit - Unfurnished | 354 (W) x 527 (H) x 158 (D) |
| CUPEB36 | 36 Way Plastic Consumer Unit - Unfurnished | 400 (W) x 527 (H) x 158 (D) |
| CUPEB42 | 42 Way Plastic Consumer Unit - Unfurnished | 354 (W) x 675 (H) x 158 (D) |
| CUPEB54 | 54 Way Plastic Consumer Unit - Unfurnished | 400 (W) x 675 (H) x 158 (D) |



REC Unit

A range of Elucian® Metal REC Units furnished with a 100A Mains Switch and a 2 Pole Type 2 275Uc (V-) 40kA SPD.



Mains
Switch Fitted



Tail Clamp
Pre-Installed



SPD Fitted



Terminal Layouts...

3 Way - Neutral & Earth Terminal Configuration



| Product SKU | Description | Dimensions (mm) |
|-------------|--|-----------------------------|
| RECEB3MSSP | 3 Way Metal REC Unit with 100A Main Switch & SPD | 110 (W) x 260 (H) x 115 (D) |



Terminal Layouts...

IP65 Garage Units



IP65 Garage Units

The Elucian IP65 Garage Unit is a tough, lockable power solution with IP65 protection and flexible cable entry, ideal for garages and outbuildings.



*Example shown - GUEB5MS3IP65



Tail Clamp
Pre-installed



RCCB Fitted



100A
Mains
Switch Fitted

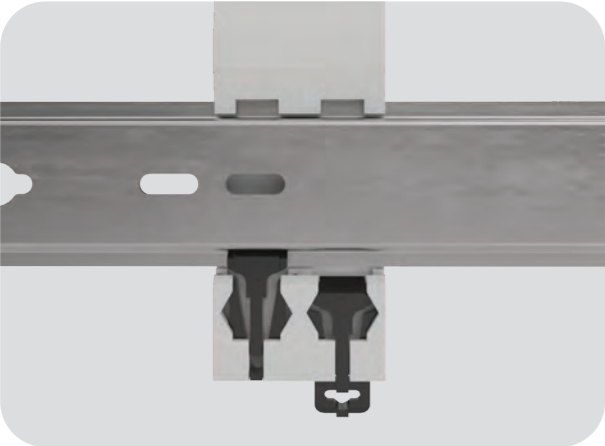


IP65
Ingress
Protection

| Product SKU | Description | Dimensions (mm) |
|-------------------|---|-----------------------------|
| GUEB5IP65 | 5 Way Unpopulated IP65 Metal Garage Unit - White | 195 (W) x 250 (H) x 120 (D) |
| GUEB5MS3IP65 | 5 Way IP65 Unit with 100A Main Switch (3 Free Ways) - White | 195 (W) x 250 (H) x 120 (D) |
| GUEB563RCD3IP65 | 5 Way IP65 Unit with 63A 30mA RCCB (3 Free Ways) - White | 195 (W) x 250 (H) x 120 (D) |
| GUEB5IP65AG | 5 Way Unpopulated IP65 Metal Garage Unit - Anthracite Grey | 195 (W) x 250 (H) x 120 (D) |
| GUEB5MS3IP65AG | 5 Way IP65 Unit with 100A Main Switch (3 Free Ways) - Anthracite Grey | 195 (W) x 250 (H) x 120 (D) |
| GUEB563RCD3IP65AG | 5 Way IP65 Unit with 63A 30mA RCCB (3 Free Ways) - Anthracite Grey | 195 (W) x 250 (H) x 120 (D) |

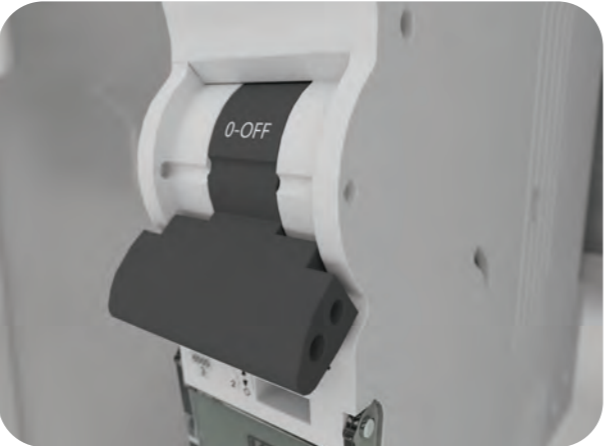
Protection Devices Features & Benefits...

Our Elucian® range of Protection Devices are easy to install, suitable for residential and light commercial environments, they provide protection against earth faults to ensure people's safety against electrocution and fires.



Clip in Devices

The Elucian® Protection Devices simply click onto the DIN Rail and can be secured with this locking mechanism. This means work can be carried out quicker and without dealing with tight spaces.



Lock Off Capabilities

Lockout devices (available at Unicrimp®) are designed to attach to the moving part of the protective device, usually a switch toggle (rocker switch) which moves from the on to off position. This ensures the switch cannot be switched back on while work is being carried out.



Clear Indication

Each protective device has clear and visible trip indication along with clear product information which is easily visible whatever the switch position.



3 Year Product Warranty

We take pride in leading the market and our 3 year warranty offers the best peace of mind available as standard today. It reflects the confidence we have in our products and the benefit of years of continuous engineering improvement.

Technical Information...



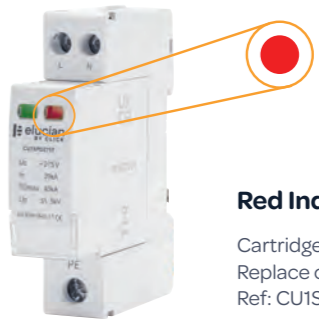
Visual Status Indicator

Individual cartridge indication; Green: OK; Red: Replace cartridge (Product Ref: CU1SPDC275)



Green Indicator

SPD cartridge is operating correctly.



Red Indicator

Cartridge is at end of life. Replace cartridge (Product Ref: CU1SPDC275)

Surge Protection

The Type 2, 2 Pole 40kA Surge Protection Device 275Uc (V-) protect all aspects of the installation from an electrical surge, anything from lightning to lightning.

As well as preventing premature aging, destruction of equipment and unnecessary downtime SPDs are recommended to protect sensitive electronic equipment connected to the installation such as computers, televisions, washing machines & LED Lighting.

Technical Data

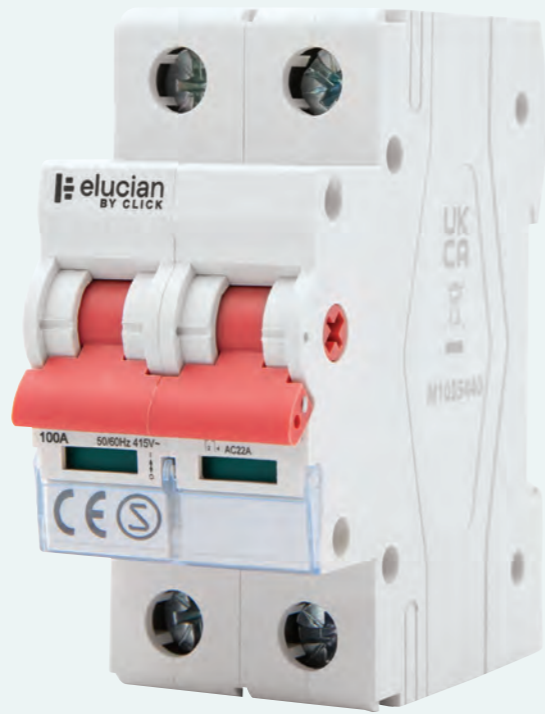
- Complies with I.S. EN 61643-1-11
- Internal overcurrent protection 300A
- Compatible earthing systems TT & TN

Installation and Connection

- The main protection SPDs are installed directly after the main incoming switch or RCCB.
- Connected in parallel to the equipment to be protected.
- Protection is assured in both common and differential modes.
- Additional overcurrent protection is not required.
- The cartridges are to be removed for insulation resistance testing.

Mains Switch-Disconnecter

2 Pole 100A Mains Isolator Switch.



- Double Pole
- 100A Rated
- Large Terminal Capacity
- 3 Year Warranty

CU2MS100
100A 2 Pole Disconnecter-Switch

Type A - RCCBs

- Bi-Directional
- Double Pole
- Type A
- Type S
- Large Terminal Capacity
- 3 Year Warranty



2 Pole 30mA Residual Current Circuit Breaker

- CU2RCD63A**
63A 30mA 2 Pole RCCB
- CU2RCD80A**
80A 30mA 2 Pole RCCB
- CU2RCD100A**
100A 30mA 2 Pole RCCB

Time Delay Residual Current Circuit Breaker

- CU2RCDTD63A**
63A 100mA 2 Pole Time Delay RCCB
- CU2RCDTD80A**
80A 100mA 2 Pole Time Delay RCCB
- CU2RCDTD100A**
100A 100mA 2 Pole Time Delay RCCB

SPDs

2 Pole 40kA Type 2 18mm Surge Protection Device With Tails

- Double Pole
- <25ns Response Time
- <1.5kV Protection Level (UP)
- 40kA Max Discharge Current
- 3 Year Warranty
- Large Terminal Capacity



CU1SPD275T
40kA 275Uc (V-) 2 Pole Type 2 SPD with Tails

Type B - RCCBs

- Bi-Directional
- Double Pole
- Type B
- Large Terminal Capacity
- 3 Year Warranty



2 Pole 30mA Residual Current Circuit Breaker

- CU3RCD25B**
2 Pole 25A 30mA RCCB - Bi-directional
- CU3RCD40B**
2 Pole 40A 30mA RCCB - Bi-directional
- CU3RCD63B**
2 Pole 63A 30mA RCCB - Bi-directional



AFDD + RCBO



1 Pole True 6kA B & C Curve AFDD + RCBO

- B**
B Curve
- C**
C Curve
- A**
Type A
- 30mA**
Trip Current
- 6kA**
True 6kA
- 
Large Terminal Capacity
- 3YR**
3 Year Warranty
- 
1 Pole + Switched Neutral



RCBO Devices

1 Pole + Neutral True 6kA B Curve & C Curve 30mA Operating RCBOs

- 
1 Pole + Neutral
- 30mA**
Trip Current
- 6kA**
True 6kA
- A**
Type A
- 
Large Terminal Capacity
- 3YR**
3 Year Warranty



Type A Single Pole with Switched Neutral B Curve

- CU1AFDD6B**
1 Pole True 6kA B Curve 6A AFDD & RCBO 30mA
- CU1AFDD10B**
1 Pole True 6kA B Curve 10A AFDD & RCBO 30mA
- CU1AFDD16B**
1 Pole True 6kA B Curve 16A AFDD & RCBO 30mA
- CU1AFDD20B**
1 Pole True 6kA B Curve 20A AFDD & RCBO 30mA
- CU1AFDD25B**
1 Pole True 6kA B Curve 25A AFDD & RCBO 30mA
- CU1AFDD32B**
1 Pole True 6kA B Curve 32A AFDD & RCBO 30mA
- CU1AFDD40B**
1 Pole True 6kA B Curve 40A AFDD & RCBO 30mA

Type A Single Pole with Switched Neutral C Curve

- CU1AFDD6C**
1 Pole True 6kA C Curve 6A AFDD & RCBO 30mA
- CU1AFDD10C**
1 Pole True 6kA C Curve 10A AFDD & RCBO 30mA
- CU1AFDD16C**
1 Pole True 6kA C Curve 16A AFDD & RCBO 30mA
- CU1AFDD20C**
1 Pole True 6kA C Curve 20A AFDD & RCBO 30mA
- CU1AFDD25C**
1 Pole True 6kA C Curve 25A AFDD & RCBO 30mA
- CU1AFDD32C**
1 Pole True 6kA C Curve 32A AFDD & RCBO 30mA
- CU1AFDD40C**
1 Pole True 6kA C Curve 40A AFDD & RCBO 30mA

Type A Single Pole B Curve

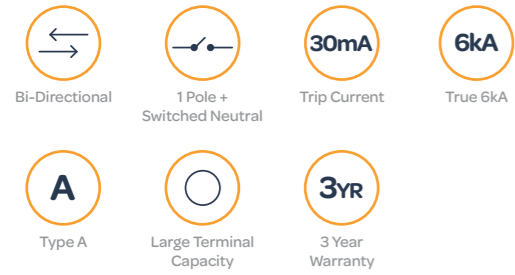
- CU1RCBO6B**
6A 30mA B Curve True 6kA RCBO
- CU1RCBO10B**
10A 30mA B Curve True 6kA RCBO
- CU1RCBO16B**
16A 30mA B Curve True 6kA RCBO
- CU1RCBO20B**
20A 30mA B Curve True 6kA RCBO
- CU1RCBO25B**
25A 30mA B Curve True 6kA RCBO
- CU1RCBO32B**
32A 30mA B Curve True 6kA RCBO
- CU1RCBO40B**
40A 30mA B Curve True 6kA RCBO

Type A Single Pole C Curve

- CU1RCBO6C**
6A 30mA C Curve True 6kA RCBO
- CU1RCBO10C**
10A 30mA C Curve True 6kA RCBO
- CU1RCBO16C**
16A 30mA C Curve True 6kA RCBO
- CU1RCBO20C**
20A 30mA C Curve True 6kA RCBO
- CU1RCBO25C**
25A 30mA C Curve True 6kA RCBO
- CU1RCBO32C**
32A 30mA C Curve True 6kA RCBO
- CU1RCBO40C**
40A 30mA C Curve True 6kA RCBO

Bi-Directional RCBO Devices

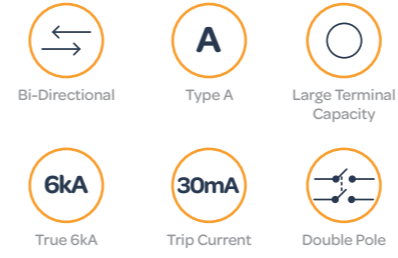
1 Pole + Switched Neutral True 6kA B Curve
& C Curve Bi-Directional 30mA Operating RCBOs



*Example shown - CU1RCBOD6B Single Pole Switched Neutral B Curve Bi-Directional

RCBO Devices

Double Pole 2 Module True 6kA B Curve
& C Curve 30mA Operating RCBOs



*Example shown - CU2RCBO45B

Type A Single Pole with Switched Neutral B Curve Bi-Directional

CU1RCBOD6B
6A 30mA B Curve Bi-Directional True 6kA RCBO

CU1RCBOD10B
10A 30mA B Curve Bi-Directional True 6kA RCBO

CU1RCBOD16B
16A 30mA B Curve Bi-Directional True 6kA RCBO

CU1RCBOD20B
20A 30mA B Curve Bi-Directional True 6kA RCBO

CU1RCBOD25B
25A 30mA B Curve Bi-Directional True 6kA RCBO

CU1RCBOD32B
32A 30mA B Curve Bi-Directional True 6kA RCBO

CU1RCBOD40B
40A 30mA B Curve Bi-Directional True 6kA RCBO

CU1RCBOD45B
45A 30mA B Curve Bi-Directional True 6kA RCBO

Type A Single Pole with Switched Neutral C Curve Bi-Directional

CU1RCBOD6C
6A 30mA C Curve Bi-Directional True 6kA RCBO

CU1RCBOD10C
10A 30mA C Curve Bi-Directional True 6kA RCBO

CU1RCBOD16C
16A 30mA C Curve Bi-Directional True 6kA RCBO

CU1RCBOD20C
20A 30mA C Curve Bi-Directional True 6kA RCBO

CU1RCBOD25C
25A 30mA C Curve Bi-Directional True 6kA RCBO

CU1RCBOD32C
32A 30mA C Curve Bi-Directional True 6kA RCBO

CU1RCBOD40C
40A 30mA C Curve Bi-Directional True 6kA RCBO

CU1RCBOD45C
45A 30mA C Curve Bi-Directional True 6kA RCBO

Type A 2 Module Double Pole B Curve

CU2RCBO45B
45A 30mA B Curve True 6kA RCBO

CU2RCBO50B
50A 30mA B Curve True 6kA RCBO

CU2RCBO63B
63A 30mA B Curve True 6kA RCBO

CU1RCBON25B
25A 30mA B Curve True 6kA RCBO

Type A 2 Module Double Pole C Curve

CU2RCBO45C
45A 30mA C Curve True 6kA RCBO

CU2RCBO50C
50A 30mA C Curve True 6kA RCBO

CU2RCBO63C
63A 30mA C Curve True 6kA RCBO

CU1RCBON6C
6A 30mA C Curve True 6kA RCBO

CU1RCBON16C
16A 30mA C Curve True 6kA RCBO

CU1RCBON20C
20A 30mA C Curve True 6kA RCBO

CU1RCBON25C
25A 30mA C Curve True 6kA RCBO

CU1RCBON32C
32A 30mA C Curve True 6kA RCBO

CU1RCBON40C
40A 30mA C Curve True 6kA RCBO

CU1RCBON45C
45A 30mA C Curve True 6kA RCBO

MCBs Single Pole

1 Pole, True 6kA B Curve & C Curve MCB Devices.



-  **B**
B Curve
-  **C**
C Curve
-  **Single Pole**
-  **6kA**
True 6kA
-  **Large Terminal Capacity**
-  **3YR**
3 Year Warranty

B Curve

- CU1MCB6B**
6A B Curve True 6kA MCB
- CU1MCB10B**
10A B Curve True 6kA MCB
- CU1MCB16B**
16A B Curve True 6kA MCB
- CU1MCB20B**
20A B Curve True 6kA MCB
- CU1MCB25B**
25A B Curve True 6kA MCB
- CU1MCB32B**
32A B Curve True 6kA MCB
- CU1MCB40B**
40A B Curve True 6kA MCB
- CU1MCB50B**
50A B Curve True 6kA MCB
- CU1MCB63B**
63A B Curve True 6kA MCB

C Curve

- CU1MCB6C**
6A C Curve True 6kA MCB
- CU1MCB10C**
10A C Curve True 6kA MCB
- CU1MCB16C**
16A C Curve True 6kA MCB
- CU1MCB20C**
20A C Curve True 6kA MCB
- CU1MCB25C**
25A C Curve True 6kA MCB
- CU1MCB32C**
32A C Curve True 6kA MCB
- CU1MCB40C**
40A C Curve True 6kA MCB
- CU1MCB50C**
50A C Curve True 6kA MCB
- CU1MCB63C**
63A C Curve True 6kA MCB

Contactors Devices

20A, 25A, 40A or 63A Modular Contactors



-  **3YR**
3 Year Warranty
-  **Normally Closed**
-  **Normally Open**

2 Pole 20A Modular Contactors (1 Module)

- MC20220**
2 Pole 1 Module 20A Contactor, 2 x Normally Open Contacts
- MC20202**
2 Pole 1 Module 20A Contactor, 2 x Normally Closed Contacts
- MC20211**
2 Pole 1 Module 20A Contactor, 1 x Normally Open, 1 x Normally Closed Contacts

4 Pole 40A Modular Contactors (3 Module)

- MC40440**
4 Pole 3 Module 40A Contactor, 4 x Normally Open Contacts
- MC40404**
4 Pole 3 Module 40A Contactor, 4 x Normally Closed Contacts
- MC40422**
4 Pole 3 Module 40A Contactor, 2 x Normally Open, 2 x Normally Closed Contacts
- MC40431**
4 Pole 3 Module 40A Contactor, 3 x Normally Open, 1 x Normally Closed Contacts

4 Pole 25A Modular Contactors (2 Module)

- MC25440**
4 Pole 2 Module 25A Contactor, 4 x Normally Open Contacts
- MC25404**
4 Pole 2 Module 25A Contactor, 4 x Normally Closed Contacts
- MC25422**
4 Pole 2 Module 25A Contactor, 2 x Normally Open, 2 x Normally Closed Contacts
- MC25431**
4 Pole 2 Module 25A Contactor, 3 x Normally Open, 1 x Normally Closed Contacts

4 Pole 63A Modular Contactors (3 Module)

- MC63440**
4 Pole 3 Module 63A Contactor, 4 x Normally Open Contacts
- MC63404**
4 Pole 3 Module 63A Contactor, 4 x Normally Closed Contacts
- MC63422**
4 Pole 3 Module 63A Contactor, 2 x Normally Open, 2 x Normally Closed Contacts
- MC63431**
4 Pole 3 Module 63A Contactor, 3 x Normally Open, 1 x Normally Closed Contacts

Energy Meters

100A

100A Rated

3YR

3 Year Warranty



CU2EMID

100A Single Phase Modbus Multifunction Energy Meter

45A

45A Rated

3YR

3 Year Warranty



CU1EMID

45A Multifunction Energy Meter

Fused Main Switch

80A & 100A Fused Main Switches

80A

HRC Fuse Supplied

Available in...

DB700

80A Fused Main Switch (80A HRC Fuse Fitted)

DB701

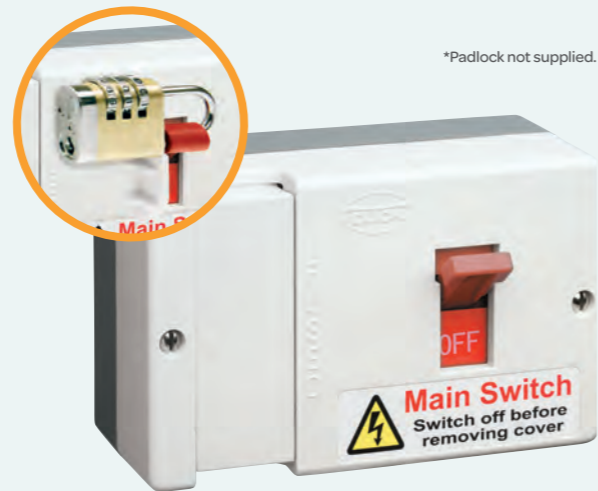
80A Fused Main Switch (80A HRC Fuse Fitted) - Lockable

DB750

100A Fused Main Switch (80A HRC Fuse Fitted)

DB751

100A Fused Main Switch (80A HRC Fuse Fitted) - Lockable



*Padlock not supplied.

Blank Modules

Single Way Din Rail Blank Module.

3YR

3 Year Warranty

CU1BLANK

Single Way Din Rail Blank Module



Elucian® Accessories...

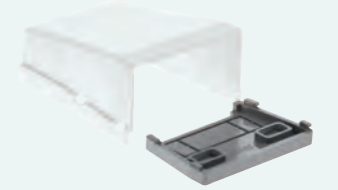
Fused Main Switch Accessories

Product SKU Description

DB981

Elongated Cable Shroud (Packaged Individually)

*Enables surface and rear entry cable access
*Suitable for 35mm² cables



Terminal Bars

Product SKU Description

CUTB4

4 Way Terminal Bar

CUTB6

6 Way Terminal Bar

CUTB7

7 Way Terminal Bar

CUTB8

8 Way Terminal Bar

CUTB9

9 Way Terminal Bar

CUTB10

10 Way Terminal Bar

CUTB12

12 Way Terminal Bar

CUTB15

15 Way Terminal Bar

CUTB16

16 Way Terminal Bar

CUTB17

17 Way Terminal Bar

CUTB18

18 Way Terminal Bar

CUTB19

19 Way Terminal Bar

CUTB20

20 Way Terminal Bar

CUTB22

22 Way Terminal Bar

CUTB23

23 Way Terminal Bar

CUTB26

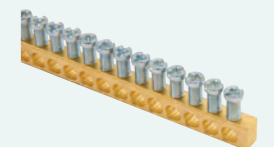
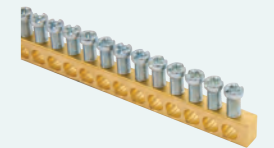
26 Way Terminal Bar

CUTBSC

Terminal Bar Support Clip & Screws (PK5)

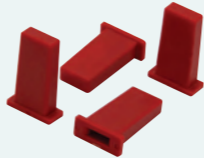
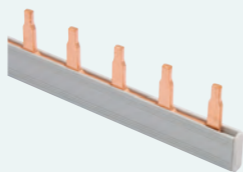
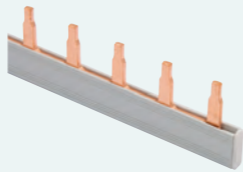
CUTBSCSL

Split Load Terminal Bar Support Clip & Screws (PK 5)



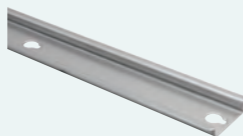
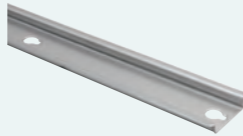
Busbar & Cover Sets

| Product SKU | Description |
|-------------|---------------------------|
| CUBUS3 | 3 Way Busbar & Cover Set |
| CUBUS4 | 4 Way Busbar & Cover Set |
| CUBUS5 | 5 Way Busbar & Cover Set |
| CUBUS6 | 6 Way Busbar & Cover Set |
| CUBUS7 | 7 Way Busbar & Cover Set |
| CUBUS8 | 8 Way Busbar & Cover Set |
| CUBUS12 | 12 Way Busbar & Cover Set |
| CUBUS20 | 20 Way Busbar & Cover Set |
| CUCAP | Busbar Caps (PK 10) |



DIN Rails

| Product SKU | Description |
|-------------|-----------------|
| CUDR10 | 10 Way DIN Rail |
| CUDR12 | 12 Way DIN Rail |
| CUDR14 | 14 Way DIN Rail |
| CUDR16 | 16 Way DIN Rail |
| CUDR18 | 18 Way DIN Rail |
| CUDR22 | 22 Way DIN Rail |



SPD Cartridge

| Product SKU | Description |
|-------------|--|
| CU1SPDC275 | 18mm 275V- 40kA SPD Cartridge <small>*Replacement for both live and neutral sides</small> |



Grommet Strip

| Product SKU | Description |
|-------------|----------------------------|
| CUGS1 | 500mm Grommet Strip (PK 3) |



Mains Cable Clamp Components

| Product SKU | Description |
|-------------|---------------------------|
| CUCLAMP | Mains Cable Clamp & Screw |
| CUPLATE | Mains Cable Clamp Plate |



Adhesive Labels

| Product SKU | Description |
|-------------|------------------------|
| CULAB1 | Set of Adhesive Labels |



Crafted with installers in mind, Elucian[®] by Click[®] presents a versatile range of Three Phase Metal Distribution Boards. Designed to suit a wide variety of installations, these boards are packed with features that enhance convenience, flexibility, and safety.



Three Phase Distribution Boards.

Our Three Phase Distribution Boards are designed to deliver reliable performance, safety, and flexibility for commercial and industrial installations. Built to meet the demands of modern electrical systems, our boards feature advanced protective devices and robust construction, ensuring compliance with industry standards. With a range of sizes and configurations, they provide a versatile solution for managing complex power distribution needs.

Tested to I.S. EN 61439-3

Elucian® Three Phase Distribution Boards are rigorously tested to meet I.S. EN 61439-3 standards, ensuring they comply with strict safety, performance, and reliability requirements.

This certification guarantees that our boards can handle the demands of modern electrical systems while providing peace of mind to installers and end-users. Meeting these standards is vital as it ensures the products are safe, durable, and fit for purpose in a wide range of applications.

Distribution Boards on **Page 48**



Typical Applications

Three Phase Distribution Boards are commonly used in commercial, industrial, and large residential applications to manage and distribute power efficiently. Typical uses include powering HVAC systems, machinery, lighting circuits, critical equipment, and large-scale general power requirements. Their robust design makes them ideal for installations requiring high performance, reliability, and compliance with demanding electrical standards.



Power and protection. All the benefits of Three Phase Distribution Boards.



RCCB, 125A Isolator or 250A Isolator

Our 8, 12, 16, 20, and 24-way boards offer versatile configurations, allowing you to choose between any of our RCCBs, 125A Isolator, or 250A Isolator to suit your installation needs.



Device Alignment

We've carefully designed our boards to maintain device alignment when fully installed, ensuring a neat and organized appearance. This also allows for easy fitting of the cover.



Quick Release Doors

The doors are fitted with spring clips, making them quick and easy to remove. This design also allows the doors to be re-fitted on the opposite side, providing ultimate flexibility.



Ventilation Slots

All our boards are designed with ventilation slots at the top and bottom, ensuring proper airflow to prevent overheating and maintain optimal performance.



Trunking Entry

Our Three Phase Distribution Boards are designed for convenience, featuring removable panels at both the top and bottom to provide unobstructed cable entry for versatile installations.



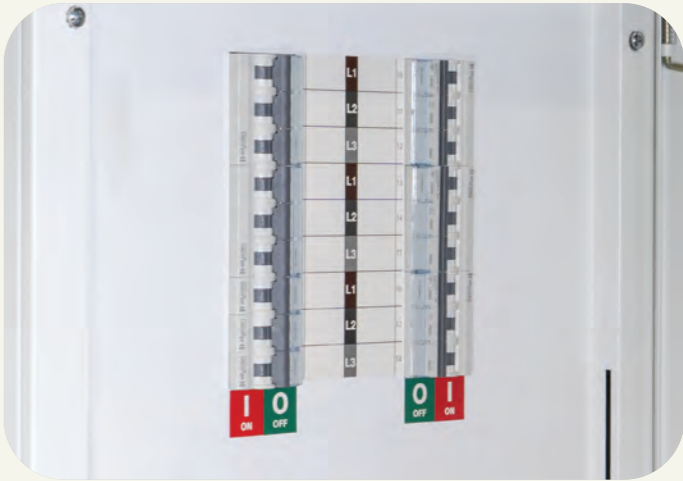
SPD Installation

Our SPDs are designed for seamless integration, allowing installation directly within our Distribution Boards without additional enclosures. Replaceable SPD cartridges are also available for all of our SPDs.



Stacked Boards

Our boards are designed for easy stacking, allowing multiple units to be stacked on top of each other. You can also stack a Single Phase 18-way extension board, providing flexible solutions for larger installations.



Front Cover Alignment

The front cover is thoughtfully designed to ensure precise alignment of cut-outs and knock-outs with the devices, reducing the risk of accidentally pressing the 'test' button on a switch.

Take a look inside our Three Phase boards.

Example 6 Way Distribution Board

1



Cable Tie Mounts
Our boards feature integrated cable tie mounts on the back, providing a secure and durable solution for cable management, ensuring a neat and long-lasting installation.

2



Double Stacked Terminals
All our boards are fitted with double-stacked terminals, allowing for easier access to the terminal bars during wiring. This design improves convenience and efficiency, making the installation process quicker and more organised.

3



Internal Earth Nut
Our boards are equipped with an internal earth nut located on the side, serving as the main earth connection. This feature ensures a secure and reliable grounding point, enhancing safety and compliance with electrical standards.

4



Space for Cables
Our boards are designed with ample space for wiring, providing easy access to devices and terminals, which simplifies the installation process and ensures a neat, organised setup.

5

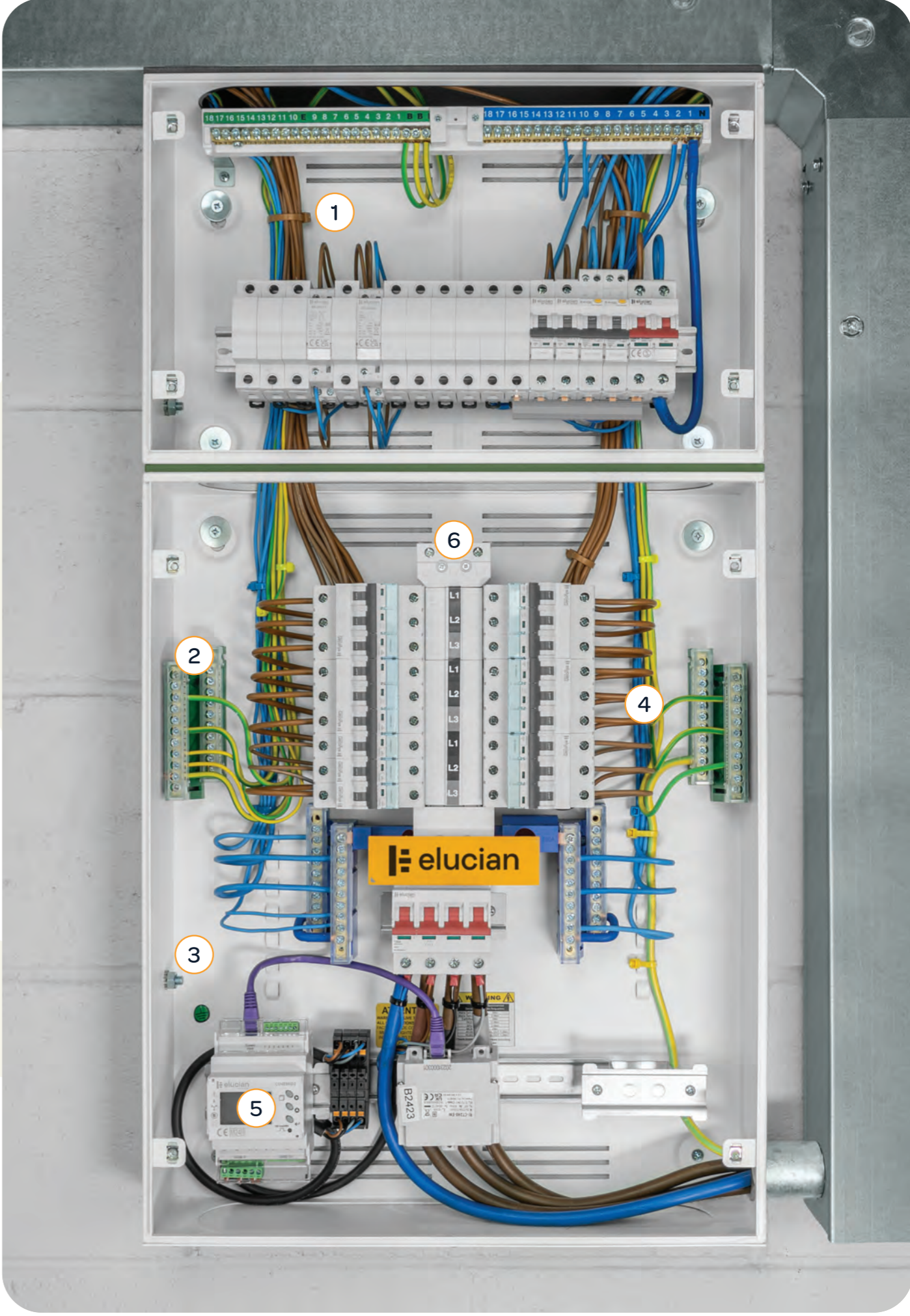


Energy Monitor
The Energy Meter can be easily installed inside our distribution boards or even in an extension board, providing flexible options for energy monitoring within your system.

6



Additional Connection to Phases or Converting to Single Phase
The top terminals can be used to extend the board for additional ways, offering flexibility in system configuration. This extension is compatible with cables up to 25mm².



4 & 6 Way Three Phase Distribution Board.

*Gear Tray and Busbars pre-installed onto all 4 & 6 Way Distribution Boards.



*Example 6 Way Three Phase Distribution Board shown.

Technical Information

| | |
|--------------------------------|-------------------------------|
| Mains Isolator Compatibility | 125A Mains Incomer / RCCB |
| Colour | White finish (RAL 9003) |
| Mounting Type | Surface |
| Material of Base & Door | Steel |
| Material of Plastic Components | ABS/PC |
| IP Rating / IK Rating | IP3X / IK05 |
| Busbar Current Rating | 125A |
| Busbar Rating | 25kA |
| Fire Resistance | 650°C / 30s |
| Ambient Temperature | -5 to +40°C, max 95% humidity |
| Storage Temperature | -40 to +75°C |
| Warranty | 10 years |
| Outgoing Protection | MCB, RCBO, AFDDs |
| Incoming Line Terminal | 50mm ² or M8 |
| Outgoing Earth Terminals | 25mm ² |
| Earth Stud | M8 Stud |
| Incoming Neutral Terminals | 50mm ² or M8 |
| Outgoing Neutral Terminals | 25mm ² |
| Gland Plate | Top and Bottom Removable |
| Locking | Key lock |
| Voltage Range | 230/400V |
| Standards | I.S. EN 61439-3 |

| Product SKU | No. of Three Phase Ways | No. of Single Phase Ways | Dimensions (W x H x D) | Fixing Centres (X) | Fixing Centres (Y) |
|-------------|-------------------------|--------------------------|------------------------|--------------------|--------------------|
| TPEB4 | 4 | 12 | 450 x 500 x 140mm | 380mm | 437mm |
| TPEB6 | 6 | 18 | 450 x 560 x 140mm | 380mm | 492mm |

Things to know...

Our 4 & 6 Way Distribution Board is designed specifically to only work with a 125A incomer, ensuring optimal performance and compatibility for safe and efficient power distribution.

Main Incomers on [Page 55](#)



8, 12, 16, 20 & 24 Way Three Phase Distribution Board.



*Example 16 Way Three Phase Distribution Board shown.

Technical Information

| | |
|--------------------------------|--|
| Mains Switch Compatibility | 125A Mains Incomer / 250A Mains Incomer / RCCB |
| Colour | White finish (RAL 9003) |
| Mounting Type | Surface |
| Material of Base & Door | Steel |
| Material of Plastic Components | ABS/PC |
| IP Rating / IK Rating | IP3X / IK05 |
| Busbar Current Rating | 250A |
| Busbar Rating | 25kA |
| Fire Resistance | 650°C / 30s |
| Ambient Temperature | -5 to +40°C, max 95% humidity |
| Storage Temperature | -40 to +75°C |
| Warranty | 10 years |
| Outgoing Protection | MCB, RCBO, AFDDs |
| Incoming Line Terminal | 50mm ² or M8 |
| Outgoing Earth Terminals | 25mm ² |
| Earth Stud | M8 Stud |
| Incoming Neutral Terminals | 50mm ² or M8 |
| Outgoing Neutral Terminals | 25mm ² |
| Gland Plate | Top and Bottom Removable |
| Locking | Key lock |
| Voltage Range | 230/400V |
| Standards | I.S EN 61439-3 |

| Product SKU | No. of Three Phase Ways | No. of Single Phase Ways | Dimensions (W x H x D) | Fixing Centres (X) | Fixing Centres (Y) |
|-------------|-------------------------|--------------------------|------------------------|--------------------|--------------------|
| TPEB8 | 8 | 24 | 450 x 760 x 140mm | 380mm | 697mm |
| TPEB12 | 12 | 36 | 450 x 870 x 140mm | 380mm | 807mm |
| TPEB16 | 16 | 48 | 450 x 980 x 140mm | 380mm | 917mm |
| TPEB20 | 20 | 60 | 450 x 1100 x 140mm | 380mm | 1037mm |
| TPEB24 | 24 | 72 | 450 x 1230 x 140mm | 380mm | 1137mm |

Things to know...

Our 8, 12, 16, 20, and 24-way boards allow you to choose between any of our RCCBs, 125A Isolator, or 250A Isolator to suit your installation needs.

Main Incomers on [Page 55](#)



Three Phase Circuit Protection Devices.

We offer a comprehensive range of Three Phase Circuit Protection Devices designed to ensure safety, reliability, and efficiency in commercial and industrial installations. Built to meet the highest standards, these devices are ideal for safeguarding complex electrical systems while ensuring seamless operation and compliance.

Main Incomers

Main Isolator Kits



Product Listing on [Page 55](#)



Main Incomers

Type A & B RCCBs



Product Listing on [Page 56](#)



Protective Devices

Blank Modules



Product Listing on [Page 71](#)



Protective Devices

Energy Meter Kits



Product Listing on [Page 70](#)



Protective Devices

SPD & Cartridges



Product Listing on [Page 59](#)



Protective Devices

AFDDs



Product Listing on [Page 61](#)



Protective Devices

RCBOs



Product Listing on [Page 63](#)



Protective Devices

1 & 3 Pole MCBs



Product Listing on [Page 64](#)



Explore all our Mains Isolator Kits.



Lock Off Capabilities.

Our Locking Kits are designed to attach to the moving part of the Main Isolator, usually a switch toggle (rocker switch) which moves from the on to off position. This ensures the switch cannot be switched back on while work is being carried out.

Lock Off Kit on [Page 69](#)



Incomer of your choice.

Our 8, 12, 16, 20, and 24-way boards offer versatile configurations, allowing you to choose between any of our RCCBs, 125A Isolator, or 250A Isolator to suit your installation needs.



Distribution Boards on [Page 50](#)



*TPMS3125KS example shown.

125A Mains Isolator Kit

| Product SKU | Poles | Current | Terminal Capacity |
|-------------|---------|---------|-------------------|
| TPMS3125KS | 3 | 125A | 50mm ² |
| TPMS4125KS | 4 (3+N) | 125A | 50mm ² |

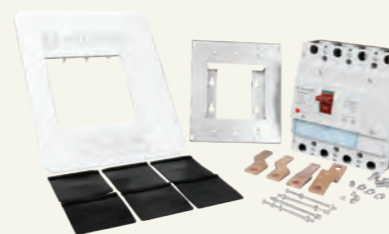
*For use on 4 & 6 Way Distribution Boards only.



*TPMS4125K example shown.

125A Mains Isolator Kit

| Product SKU | Poles | Current | Terminal Capacity |
|-------------|---------|---------|-------------------|
| TPMS3125K | 3 | 125A | 50mm ² |
| TPMS4125K | 4 (3+N) | 125A | 50mm ² |



*TPMS4250K example shown.

250A Mains Isolator Kit

| Product SKU | Poles | Current | Terminal Capacity |
|-------------|---------|---------|-------------------|
| TPMS3250K | 3 | 250A | 95mm ² |
| TPMS4250K | 4 (3+N) | 250A | 95mm ² |

*Accepts 120mm M8 Narrow Palm Lugs.

Type A & B RCCB devices.

Reliable protection for every installation.

Type A RCCB

Type A RCCBs detect and disconnect both AC and pulsating DC, making it ideal for protecting devices like LED lighting, dimmers, and appliances with electronic components, ensuring enhanced safety in modern electrical installations.

Ensures tripping for:

- Residual AC Currents
- Pulsating DC Currents



CU4RCD63A example shown.

Type A - RCCB

| Product SKU | Poles | Type | Current | Milliamp |
|------------------------------------|---------|------|---------|----------|
| CU4RCD63A | 4 (3+N) | A | 63A | 30mA |
| CU4RCD80A | 4 (3+N) | A | 80A | 30mA |
| CU4RCD100A | 4 (3+N) | A | 100A | 30mA |
| *CU4RCD1100A | 4 (3+N) | A | 100A | 100mA |
| *CU4RCD3100A | 4 (3+N) | A | 100A | 300mA |
| *CU4RCDTD100A (Time Delay RCD) | 4 (3+N) | S | 100A | 100mA |
| *CU4RCDTD3100A (Time Delay RCD) | 4 (3+N) | S | 100A | 300mA |

Type B RCCB

Type B RCCBs are designed to detect and disconnect both AC, pulsating DC, and smooth DC. It provides advanced protection for installations with equipment that may produce continuous DC currents, such as solar inverters, electric vehicle charging stations, and other specialized electronic systems.

Ensures tripping for:

- Residual AC Currents
- Pulsating DC Currents
- Smooth DC Currents



CU4RCD25B example shown.

Type B - RCCB

| Product SKU | Poles | Type | Current | Milliamp |
|-------------|---------|------|---------|----------|
| CU4RCD25B | 4 (3+N) | B | 25A | 30mA |
| CU4RCD40B | 4 (3+N) | B | 40A | 30mA |
| CU4RCD63B | 4 (3+N) | B | 63A | 30mA |

*To use these RCCBs as isolators, you will need to use the **TPRCDLINK**

| Product SKU | Description |
|-------------|---------------------------|
| TPRCDLINK | Three phase RCCB Link Kit |



Ultimate Surge Protection. Explore our SPD range.

Type 1+2 SPD

A Type 1+2 SPD is a hard-wired, permanently connected device installed between the utility transformer and the main service equipment. It protects against external surges and direct lightning strokes.



Safeguard Your Installation



Type 2 SPD

A Type 2 SPD is installed on the load side of the main service equipment, typically at the service entrance or in distribution panels. It protects against internal surges and indirect lightning strokes, safeguarding equipment from damaging voltage spikes.



Overvoltage Protection



*CU4SPD275T2 example shown.

Surge Protective Devices

| Product SKU | Poles | Type | Operating Voltage | Breaking Capacity |
|-------------|---------|------|-------------------|-------------------|
| CU4SPD275 | 4 (3+N) | 1+2 | 275Uc (V-) | 40kA |
| CU4SPD275T2 | 4 (3+N) | 2 | 275Uc (V-) | 40kA |

- Copper Earth Plate supplied
- 625mm, 6mm² Tails supplied
- Built-in overcurrent protection (Rated current: 300A)

SPD Cartridges

| Product SKU | Poles | Type | Operating Voltage | Breaking Capacity |
|--------------|-------|------|-------------------|-------------------|
| CU4SPDC275 | 1 | 1+2 | 275Uc (V-) | 40kA |
| CU4SPDC275T2 | 1 | 2 | 275Uc (V-) | 40kA |



*CU4SPDC275 example shown.

Advanced protection. Discover our AFDD solutions.



B & C Curve

Our AFDDs are available in B and C curves, with the following currents, 6A, 10A, 16A, 20A, 25A, 32A and 40A.



Self Test Function

AFDDs feature a self-test function that activates on first power-up and runs hourly to ensure full operation.



Neutral Out Tails

Our AFDDs provide a 1m Neutral Tail as standard. The AFDDs are also single width (18mm).

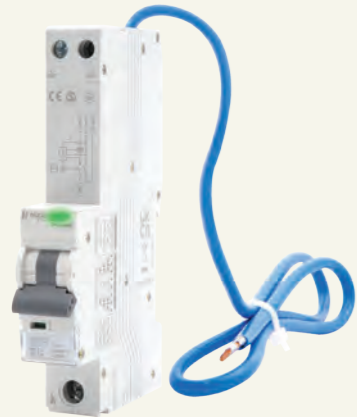


*CU1AFDD6B10 example shown.

B Curve - AFDD + RCBO

| Product SKU | Poles | Type | Current | Milliamp | Breaking Capacity |
|--------------|-------|------|---------|----------|-------------------|
| CU1AFDD6B10 | 1 | A | 6A | 30mA | 10kA |
| CU1AFDD10B10 | 1 | A | 10A | 30mA | 10kA |
| CU1AFDD16B10 | 1 | A | 16A | 30mA | 10kA |
| CU1AFDD20B10 | 1 | A | 20A | 30mA | 10kA |
| CU1AFDD25B10 | 1 | A | 25A | 30mA | 10kA |
| CU1AFDD32B10 | 1 | A | 32A | 30mA | 10kA |
| CU1AFDD40B10 | 1 | A | 40A | 30mA | 10kA |

• 1m Length Fly-Lead Supplied



*CU1AFMCB6B10 example shown.

B Curve - AFDD + MCB

| Product SKU | Poles | Current | Breaking Capacity |
|---------------|-------|---------|-------------------|
| CU1AFMCB6B10 | 1 | 6A | 10kA |
| CU1AFMCB10B10 | 1 | 10A | 10kA |
| CU1AFMCB16B10 | 1 | 16A | 10kA |
| CU1AFMCB20B10 | 1 | 20A | 10kA |
| CU1AFMCB32B10 | 1 | 32A | 10kA |
| CU1AFMCB40B10 | 1 | 40A | 10kA |

• 1m Length Fly-Lead Supplied



*CU1AFDD6C10 example shown.

C Curve - AFDD + RCBO

| Product SKU | Poles | Type | Current | Milliamp | Breaking Capacity |
|--------------|-------|------|---------|----------|-------------------|
| CU1AFDD6C10 | 1 | A | 6A | 30mA | 10kA |
| CU1AFDD10C10 | 1 | A | 10A | 30mA | 10kA |
| CU1AFDD16C10 | 1 | A | 16A | 30mA | 10kA |
| CU1AFDD20C10 | 1 | A | 20A | 30mA | 10kA |
| CU1AFDD25C10 | 1 | A | 25A | 30mA | 10kA |
| CU1AFDD32C10 | 1 | A | 32A | 30mA | 10kA |
| CU1AFDD40C10 | 1 | A | 40A | 30mA | 10kA |

• 1m Length Fly-Lead Supplied

Explore our full range of RCBOs.

What is an RCBO?

These devices combine the functionality of an MCB and RCD into one single device/module.

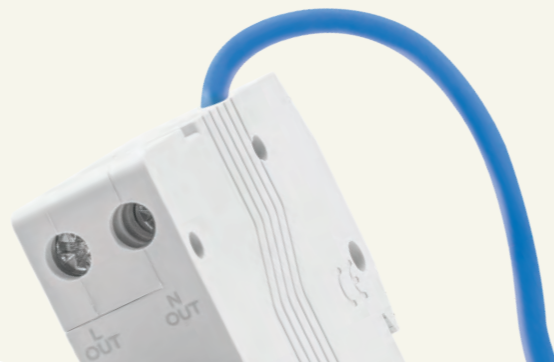
Available as a Switched or Unswitched Neutral, Type A RCD with different inrush curve types B or C, these protective devices have been miniaturised to maximise the available space above for termination or final circuits.



RCBO - Residual Current Operated Circuit Breaker, with integrated over-current protection.

1m Fly-Lead

The Neutral fly lead has been made long enough to ensure safe connection to the dedicated Neutral bars in the distribution boards.



10kA Breaking Capacity

A 10kA rating for an RCBO means it can safely handle and interrupt fault currents up to 10,000 amps. This high rating ensures the device is capable of protecting circuits in environments with large fault currents, offering greater safety and reliability.



*CU1RCBO6B10 example shown.



*CU1RCBO6C10 example shown.

B Curve - RCBO

| Product SKU | Poles | Type | Current | Milliamp | Breaking Capacity |
|--------------|-------|------|---------|----------|-------------------|
| CU1RCBO6B10 | 1 | A | 6A | 30mA | 10kA |
| CU1RCBO10B10 | 1 | A | 10A | 30mA | 10kA |
| CU1RCBO16B10 | 1 | A | 16A | 30mA | 10kA |
| CU1RCBO20B10 | 1 | A | 20A | 30mA | 10kA |
| CU1RCBO25B10 | 1 | A | 25A | 30mA | 10kA |
| CU1RCBO32B10 | 1 | A | 32A | 30mA | 10kA |
| CU1RCBO40B10 | 1 | A | 40A | 30mA | 10kA |

• 1m Length Fly-Lead Supplied

C Curve - RCBO

| Product SKU | Poles | Type | Current | Milliamp | Breaking Capacity |
|--------------|-------|------|---------|----------|-------------------|
| CU1RCBO6C10 | 1 | A | 6A | 30mA | 10kA |
| CU1RCBO10C10 | 1 | A | 10A | 30mA | 10kA |
| CU1RCBO16C10 | 1 | A | 16A | 30mA | 10kA |
| CU1RCBO20C10 | 1 | A | 20A | 30mA | 10kA |
| CU1RCBO25C10 | 1 | A | 25A | 30mA | 10kA |
| CU1RCBO32C10 | 1 | A | 32A | 30mA | 10kA |
| CU1RCBO40C10 | 1 | A | 40A | 30mA | 10kA |

• 1m Length Fly-Lead Supplied

Explore all our 1 & 3 Pole MCBs.



*CU1MCB6B10 example shown.

B Curve - MCB

| Product SKU | Poles | Current | Breaking Capacity |
|-------------|-------|---------|-------------------|
| CU1MCB6B10 | 1 | 6A | 10kA |
| CU1MCB10B10 | 1 | 10A | 10kA |
| CU1MCB16B10 | 1 | 16A | 10kA |
| CU1MCB20B10 | 1 | 20A | 10kA |
| CU1MCB25B10 | 1 | 25A | 10kA |
| CU1MCB32B10 | 1 | 32A | 10kA |
| CU1MCB40B10 | 1 | 40A | 10kA |
| CU1MCB50B10 | 1 | 50A | 10kA |
| CU1MCB63B10 | 1 | 63A | 10kA |



*CU1MCB6C10 example shown.

C Curve - MCB

| Product SKU | Poles | Current | Breaking Capacity |
|-------------|-------|---------|-------------------|
| CU1MCB6C10 | 1 | 6A | 10kA |
| CU1MCB10C10 | 1 | 10A | 10kA |
| CU1MCB16C10 | 1 | 16A | 10kA |
| CU1MCB20C10 | 1 | 20A | 10kA |
| CU1MCB25C10 | 1 | 25A | 10kA |
| CU1MCB32C10 | 1 | 32A | 10kA |
| CU1MCB40C10 | 1 | 40A | 10kA |
| CU1MCB50C10 | 1 | 50A | 10kA |
| CU1MCB63C10 | 1 | 63A | 10kA |



*CU1MCB6D10 example shown.

D Curve - MCB

| Product SKU | Poles | Current | Breaking Capacity |
|-------------|-------|---------|-------------------|
| CU1MCB6D10 | 1 | 6A | 10kA |
| CU1MCB10D10 | 1 | 10A | 10kA |
| CU1MCB16D10 | 1 | 16A | 10kA |
| CU1MCB20D10 | 1 | 20A | 10kA |
| CU1MCB25D10 | 1 | 25A | 10kA |
| CU1MCB32D10 | 1 | 32A | 10kA |
| CU1MCB40D10 | 1 | 40A | 10kA |
| CU1MCB50D10 | 1 | 50A | 10kA |
| CU1MCB63D10 | 1 | 63A | 10kA |



*CU3MCB6B10 example shown.

B Curve - MCB

| Product SKU | Poles | Current | Breaking Capacity |
|-------------|-------|---------|-------------------|
| CU3MCB6B10 | 3 | 6A | 10kA |
| CU3MCB10B10 | 3 | 10A | 10kA |
| CU3MCB16B10 | 3 | 16A | 10kA |
| CU3MCB20B10 | 3 | 20A | 10kA |
| CU3MCB25B10 | 3 | 25A | 10kA |
| CU3MCB32B10 | 3 | 32A | 10kA |
| CU3MCB40B10 | 3 | 40A | 10kA |
| CU3MCB50B10 | 3 | 50A | 10kA |
| CU3MCB63B10 | 3 | 63A | 10kA |



*CU3MCB6C10 example shown.

C Curve - MCB

| Product SKU | Poles | Current | Breaking Capacity |
|-------------|-------|---------|-------------------|
| CU3MCB6C10 | 3 | 6A | 10kA |
| CU3MCB10C10 | 3 | 10A | 10kA |
| CU3MCB16C10 | 3 | 16A | 10kA |
| CU3MCB20C10 | 3 | 20A | 10kA |
| CU3MCB25C10 | 3 | 25A | 10kA |
| CU3MCB32C10 | 3 | 32A | 10kA |
| CU3MCB40C10 | 3 | 40A | 10kA |
| CU3MCB50C10 | 3 | 50A | 10kA |
| CU3MCB63C10 | 3 | 63A | 10kA |



*CU3MCB6D10 example shown.

D Curve - MCB

| Product SKU | Poles | Current | Breaking Capacity |
|-------------|-------|---------|-------------------|
| CU3MCB6D10 | 3 | 6A | 10kA |
| CU3MCB10D10 | 3 | 10A | 10kA |
| CU3MCB16D10 | 3 | 16A | 10kA |
| CU3MCB20D10 | 3 | 20A | 10kA |
| CU3MCB25D10 | 3 | 25A | 10kA |
| CU3MCB32D10 | 3 | 32A | 10kA |
| CU3MCB40D10 | 3 | 40A | 10kA |
| CU3MCB50D10 | 3 | 50A | 10kA |
| CU3MCB63D10 | 3 | 63A | 10kA |

2 Pole - 20A Contactors (1 Module)



*MC20211 example shown.

| Product SKU | Description |
|-------------|--|
| MC20211 | 2 Pole 1 Module 20A Contactor, 1 x Normally Open, 1 x Normally Closed Contacts |
| MC20220 | 2 Pole 1 Module 20A Contactor, 2 x Normally Open Contacts |
| MC20202 | 2 Pole 1 Module 20A Contactor, 2 x Normally Closed Contacts |

4 Pole - 25A Contactors (2 Module)



*MC25422 example shown.

| Product SKU | Description |
|-------------|--|
| MC25422 | 4 Pole 2 Module 25A Contactor, 2 x Normally Open, 2 x Normally Closed Contacts |
| MC25431 | 4 Pole 2 Module 25A Contactor, 3 x Normally Open, 1 x Normally Closed Contacts |
| MC25404 | 4 Pole 2 Module 25A Contactor, 4 x Normally Closed Contacts |
| MC25440 | 4 Pole 2 Module 25A Contactor, 4 x Normally Open Contacts |



*MC40422 example shown.

4 Pole - 40A Contactors (3 Module)

| Product SKU | Description |
|-------------|--|
| MC40422 | 4 Pole 3 Module 40A Contactor, 2 x Normally Open, 2 x Normally Closed Contacts |
| MC40431 | 4 Pole 3 Module 40A Contactor, 3 x Normally Open, 1 x Normally Closed Contacts |
| MC40440 | 4 Pole 3 Module 40A Contactor, 4 x Normally Open Contacts |
| MC40404 | 4 Pole 3 Module 40A Contactor, 4 x Normally Closed Contacts |



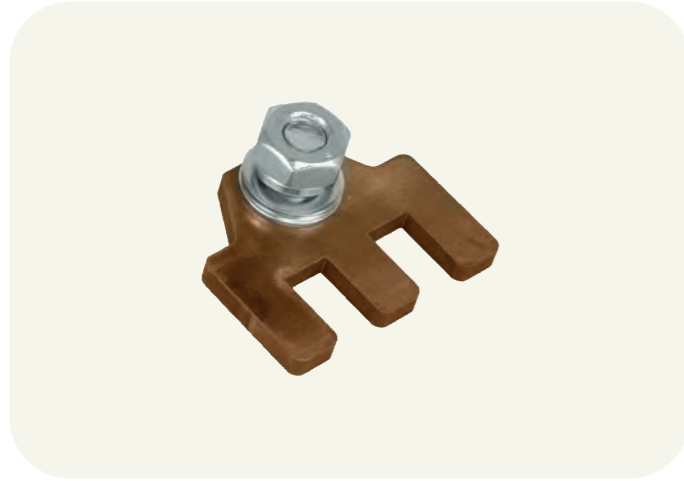
*MC63422 example shown.

4 Pole - 63A Contactors (3 Module)

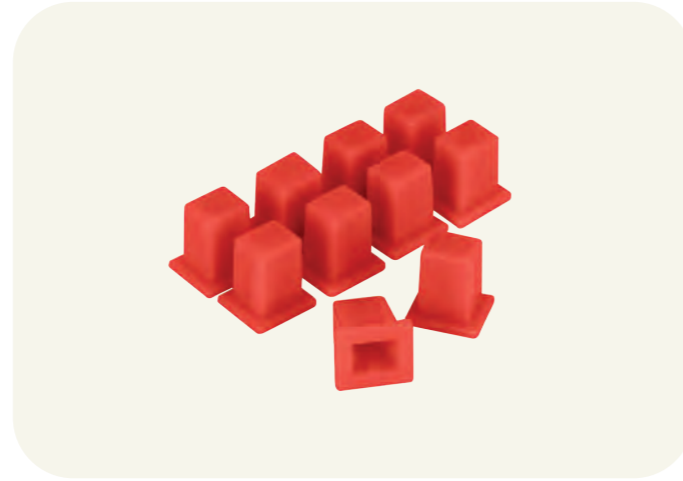
| Product SKU | Description |
|-------------|--|
| MC63422 | 4 Pole 3 Module 63A Contactor, 2 x Normally Open, 2 x Normally Closed Contacts |
| MC63431 | 4 Pole 3 Module 63A Contactor, 3 x Normally Open, 1 x Normally Closed Contacts |
| MC63404 | 4 Pole 3 Module 63A Contactor, 4 x Normally Closed Contacts |
| MC63440 | 4 Pole 3 Module 63A Contactor, 4 x Normally Open Contacts |

Spares & accessories, everything you need.

The Elucian® range offers a wide variety of compatible accessories, including cable entry plates and pattress mounts, to make any installation easier and faster.



| Product SKU | Description |
|--------------|---------------------------------------|
| TP2SP | Three Phase to Single Phase converter |



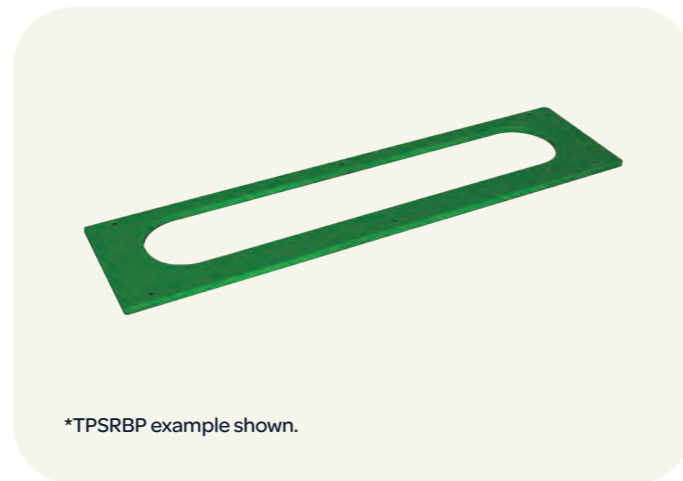
| Product SKU | Description |
|-----------------|-----------------------|
| TP125CAP | 125A busbar caps (10) |
| TP250CAP | 250A busbar caps (10) |



| Product SKU | Description |
|---------------|----------------------------------|
| TPLOCK | Three Phase Isolator Locking kit |



| Product SKU | Description |
|----------------|-------------------------|
| TPPLATE | Three Phase Gland plate |



| Product SKU | Description |
|---------------|--|
| TPSRBP | Synthetic Bonded Resin Paper with Slot |



| Product SKU | Description |
|-----------------|------------------------|
| TPLABELK | Three Phase Label pack |



| Product SKU | Description |
|----------------|---------------------|
| RJ45150 | RJ45 Cable - 1500mm |

Energy Meters for smarter installations.



*CU4EM125K example shown.

Energy Meter Kits

| Product SKU | Description |
|--|---|
| CU4EM125K | 125A Three Phase Energy Meter Kit |
| <ul style="list-style-type: none"> • Three Phase Energy Meter • 125A Energy Meter CT | <ul style="list-style-type: none"> • 30cm Length RJ45 Cable • 1m Power Supply Cable <p>*1.5m RJ45 available on page 69.</p> |
| CU4EM250K | 250A Three Phase Energy Meter Kit |
| <ul style="list-style-type: none"> • Three Phase Energy Meter • 250A Energy Meter CT | <ul style="list-style-type: none"> • 30cm Length RJ45 Cable • 1m Power Supply Cable <p>*1.5m RJ45 available on page 69.</p> |

Blank Modules for every installation.



*CU33BLANK example shown.

Blank Modules

| Product SKU | Description |
|-------------|--|
| CU31BLANK | Single Way Din Rail Blank Module with 125A & 250A Adaptors |
| CU33BLANK | Triple Way Din Rail Blank Module with 125A & 250A Adaptors |
| CUBLANKP12 | 12 Way Plastic Blank Plate (2 x 6 Way) |

Internal Installation.

Our Three Phase Multi-Function Energy Meter Kit is designed for seamless integration into all of our distribution boards. Supplied as a complete kit, including an Energy Meter CT, it simplifies installation with fewer cables required, providing everything you need for quick and efficient setup.

- Directly installed into our boards
- Energy Meter CT provided in both kits
- Fewer cables required



Example installation on [Page 46](#)



Extension Boards and Enclosures.



*TPXB example shown.



*TPXB18S example shown.

| Product SKU | Description | Dimensions (W x H x D) |
|-------------|--|------------------------|
| TPXB | Extension Board without Pan Assembly | 450 x 280 x 140mm |
| TPXB18S | 18 Way Single Phase Extension Board | 450 x 280 x 140mm |
| XBP18S | 18 Way Single Extension Board Pan Assembly | |

Complete the installation...

We've Got You Covered

The Unicrimp® range includes cable ties, crimp terminals, PVC tape, copper tube terminals, cable clips, brass/nylon glands, tail glands and earth sleeving – providing everything required to harness cable between the consumer unit and the end accessory.

Helps to provide compliance with Regulation 522.8.5.



UNICRIMP®

The No.1 Sealant & Adhesives

The No.1 hybrid sealant and adhesive. OB1 bonds and seals a range of materials, works in damp conditions and even under water. User-friendly, hybrid polymer formulation for the ultimate in bonding and sealing.



OB1 MULTI-SURFACE CONSTRUCTION SEALANT & ADHESIVE

Cable & Wire Accessories.

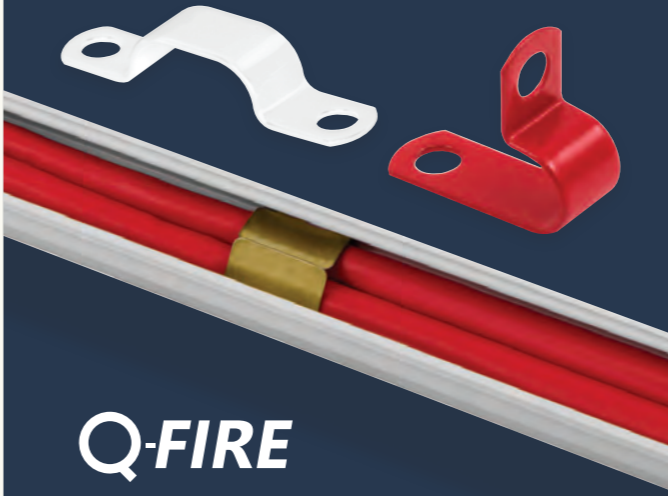
Explore our extensive range of cable management consumables. All our products are manufactured under stringent quality control systems and are fully compliant with the very latest industry regulations.



Q-CRIMP®

Fire-Rated Accessories

Don't get caught out by the latest regs! Explore our range of fire rated products and prevent cables from premature collapse during a fire and keep emergency services and the public safe.



Q-FIRE

Lever Connectors & Connection Boxes

Focusing on strong, quick and reliable solutions, the new Q-Nect range offers great versatility for electrical connections. Each product is packed with features which makes your installations quicker and easier.



Q-NECT

Time Switches. Complete your install.

NFC DIN Rail Time Switches

NFC (Near Field Communication) is a wireless communication protocol that allows you to program the switch using the free Sangamo Connect app on an Android NFC Smart phone.

This works the same way as contactless bank cards, oyster travel cards and mobile payment systems. You set the program up on the app and hold the phone next to the switch to read, write or transfer programming times.

Bluetooth DIN Rail Time Switches

Bluetooth is a wireless communication protocol that allows programming of the switch using the free APP available on Android and IOS smart phones and tablets. This works the same way as contactless bank cards, oyster travel cards and mobile payment systems. The program is setup on the APP and transfers to the switch when the smart device is held in close proximity.



DIN Rail Time Switches

All Sangamo's DIN Rail mountable time switches are designed for 35mm "Top Hat" rail. Switches come in 1, 2 or 4 modules, each module is 17.5mm wide, which fits the required width in the DIN enclosure.

Using the 25195 USB Hub and Easy Vue software or 25196 USB Hub with bluetooth and connect app programs can be transferred to a 25193 data key and then to one or multiple switches. 1 module switches do not require a Data Key as the fascia can be removed and slotted into the Hub directly.



NFC DIN Rail Time Switches



72113NFC

Standard NFC 2 Module 1 Channel, 7 Day, 56 Operations

72102NFC

Astro NFC Module 1 Channel, 24HR Timer, 4 Operations

72103NFC

Astro NFC 2 Module 1 Channel, 7 Day, 56 Operations

Bluetooth DIN Rail Time Switches



SC2811PRO4

Standard Bluetooth 2 Module 1 Channel, 7 Day, 100 Operations

SC2813PRO4

Astro Bluetooth 2 Module 1 Channel, 7 Day, 100 Operations

SC2823PRO4

Astro Bluetooth 2 Module 2 Channel, 7 Day, 100 Operations

DIN Rail Time Switches



71111

Standard 1 Module 1 Channel, 7 Day, 46 Operations

72112

Standard 2 Module 1 Channel, 7 Day, 46 Operations

25162

Standard 2 Module 1 Channel, Yearly, 300 Operations

26404

Standard 4 Module 4 Channel, 7 Day, 300 Operations

11002

Standard 1 Module 24HR Timer

71101

Astro 1 Module 1 Channel, 7 Day, 60 Operations

72101

Astro 2 Module 1 Channel, 7 Day, 60 Operations

72201

Astro 2 Module 2 Channel, 7 Day, 60 Operations

More from the Scolmore® Group.

Wiring Accessories.

Click Scolmore® is one of the UK's leading manufacturers of electrical accessories. The company is proud to be a British-based, family-run business with an international reputation for quality, innovation and exemplary customer service.



Lighting Solutions.

The comprehensive collection of lighting products from Ovia® will provide solutions for a whole spectrum of projects in a broad variety of sectors, including domestic, commercial, industrial, utility, amenity, emergency lighting and floodlighting.



Cable & Wiring Accessories.

Unicrimp offers a comprehensive range of cable accessories under the Q-crimp, Q-Fire, and Q-Nect brands, exclusively for the electrical trade. All products meet strict quality standards and comply with the latest regulations.



- Cable Ties
- Crimp Terminals
- PVC Tape
- Copper Tube Terminals
- Cable Clips
- Brass & Nylon Glands
- Tail Glands
- Earth Sleeving

Helps to provide compliance with Regulation 522.8



Fire & Security Products.

ESP is a leading supplier of electronic security and fire protection products, including Smart Security, CCTV, Access Control, Fire Protection, Emergency Lighting, and Sangamo Time Switches and Heating Controls.



No.1 Sealant and Adhesives.

The No.1 hybrid sealant and adhesive. OB1 bonds and seals a range of materials, works in damp conditions and even under water. User-friendly, hybrid polymer formulation for the ultimate in bonding and sealing.



Southern Ireland

click Litehouse

18 Corrig Road,
Sandyford Industrial Estate,
Dublin, D18 WV79, Ireland

+353 (1) 2811 122
sales@clicklighthouse.ie
www.clicklighthouse.ie

