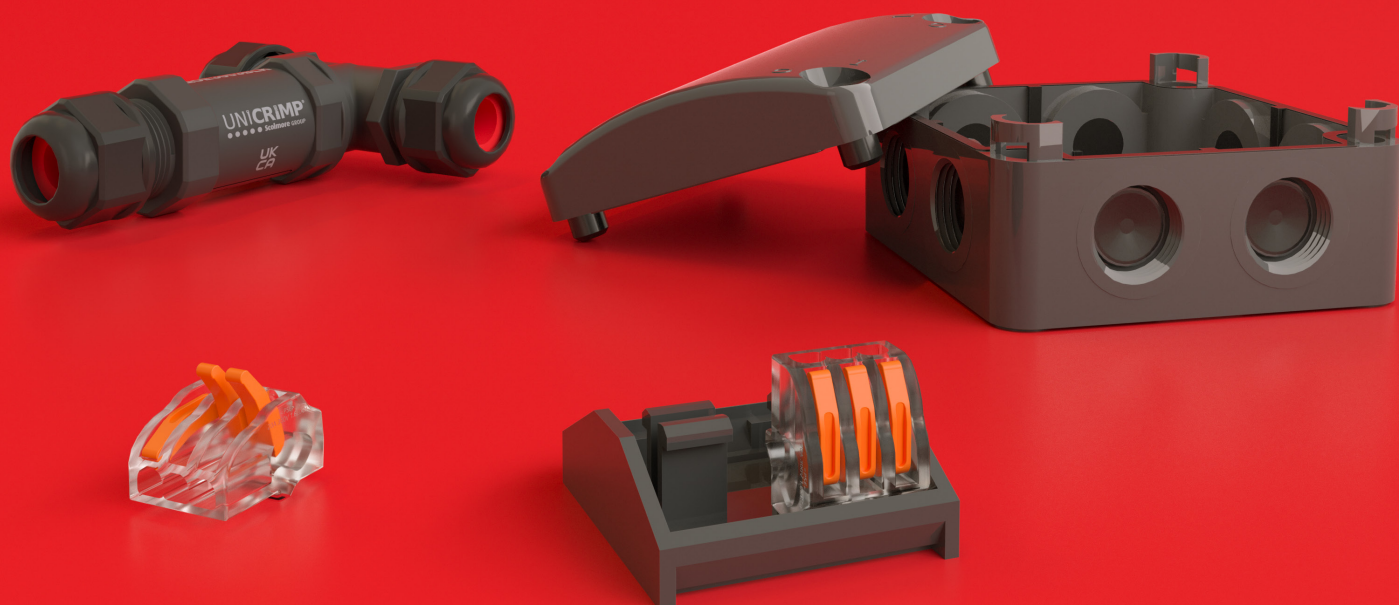


# Lever Connectors & Connection Boxes

Q-**NECT**

Strong, quick and reliable solutions.

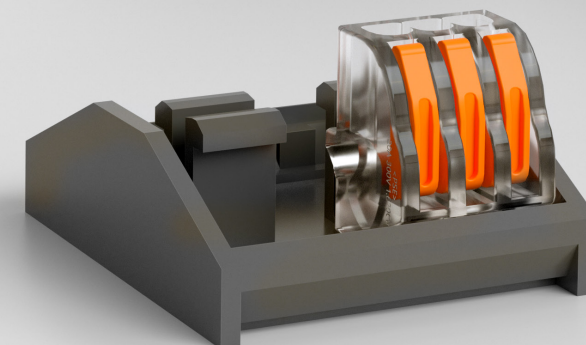
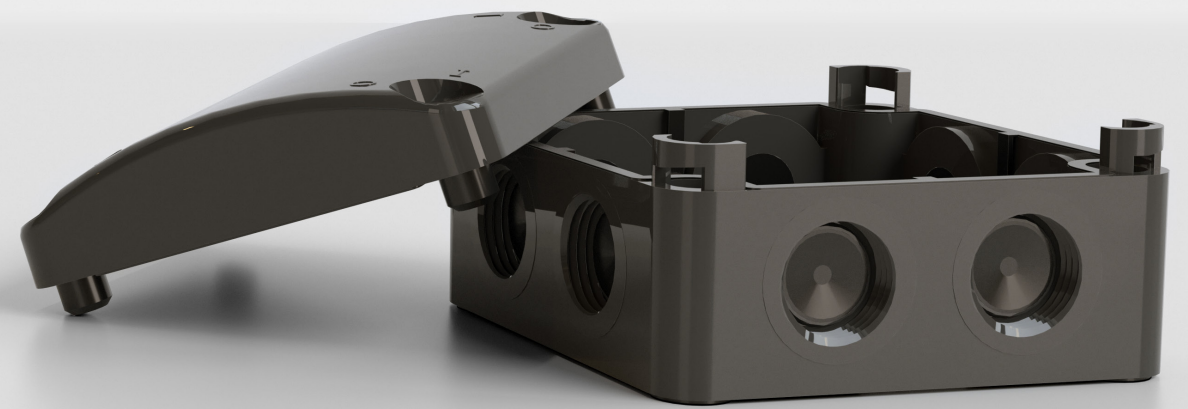


[unicrimp.com](http://unicrimp.com)

**UNICRIMP**  
● ● ● ● ● A Scolmore GROUP Company



Focusing on strong, quick and reliable solutions, the new Q-Nect range offers great versatility for electrical connections. Each product is packed with features which makes your installations quicker and easier.



**Q-NECT**

Contents.

05

**Lever Connectors**

The best way to connect.

---

07

**IP66 Junction Box**

Strong & secure connections.

---

09

**2 & 3 Way  
Connection Box**

Compact and reliable.

---

11

**3 Way IP68 ‘T’ &  
Inline Connectors**

The best outdoor solution.

---

13

**More from Unicrimp**

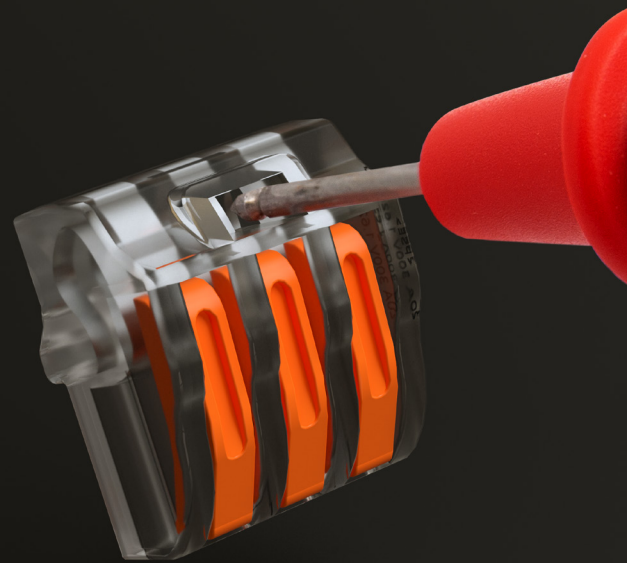
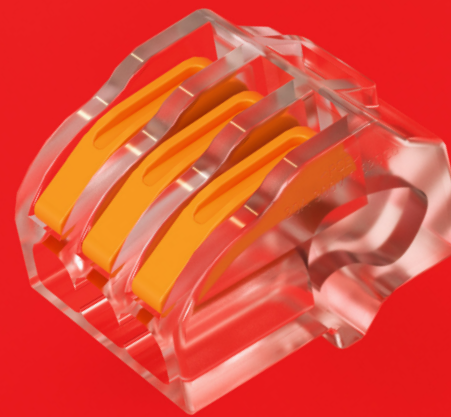
Explore everything Unicrimp.



# 2, 3 and 5 Way Lever Connectors

## Fast & Easy to Use

Suitable for solid, stranded and flexible cable types, the lever operated connectors use screwless spring clamp technology, which means there is no need for any tools.



## Inspection Window

The inspection window allows for quick and easy testing while the Lever Connector is installed. The inspection window is located at the top of the Lever Connector.

## QL2322

32A 450V Transparent 2 Port Lever Wire Connectors

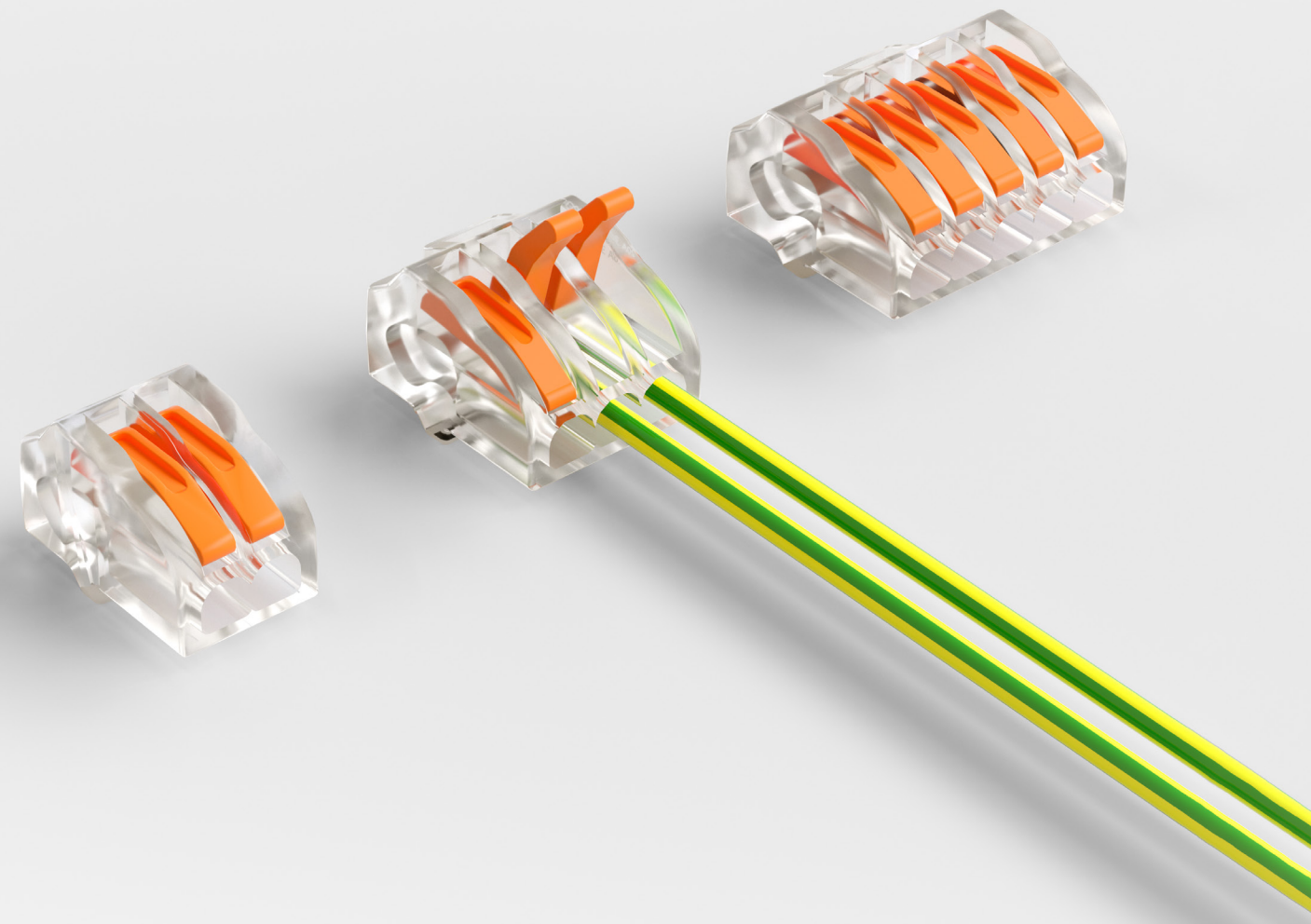
## QL3322

32A 450V Transparent 3 Port Lever Wire Connectors

## QL5322

32A 450V Transparent 5 Port Lever Wire Connectors

**Q-NECT**



## Permanent & Secure Connections

Offering a strong and reliable connection our Lever Connectors have a conductor range of 0.2 – 4mm. Because they are reusable, they are the perfect solution for temporary or mobile installations.

## Transparent Housing

All of our Q-Nect Lever Connectors are transparent. This allows you to easily see if your wires are positioned correctly inside. Making sure you get the best connection possible.

# IP66 Weatherproof Junction Box

## Efficient Installation

The IP Box can house 4 x 3 Port Lever Connectors (QL3322) using the 360° detachable cradle. The IP Box also utilises a curved lid which provides additional space for wires, the lid is locked using 1/4 turn fasteners.

## 10 Membrane Entry Points

Protection against moisture and dust is assisted with the self sealing membranes providing a faster and more secure cable entry while maintaining the IP66 rating.



\*Available in black or grey.

## QOE8553BLK

Black IP66 Weatherproof Enclosure

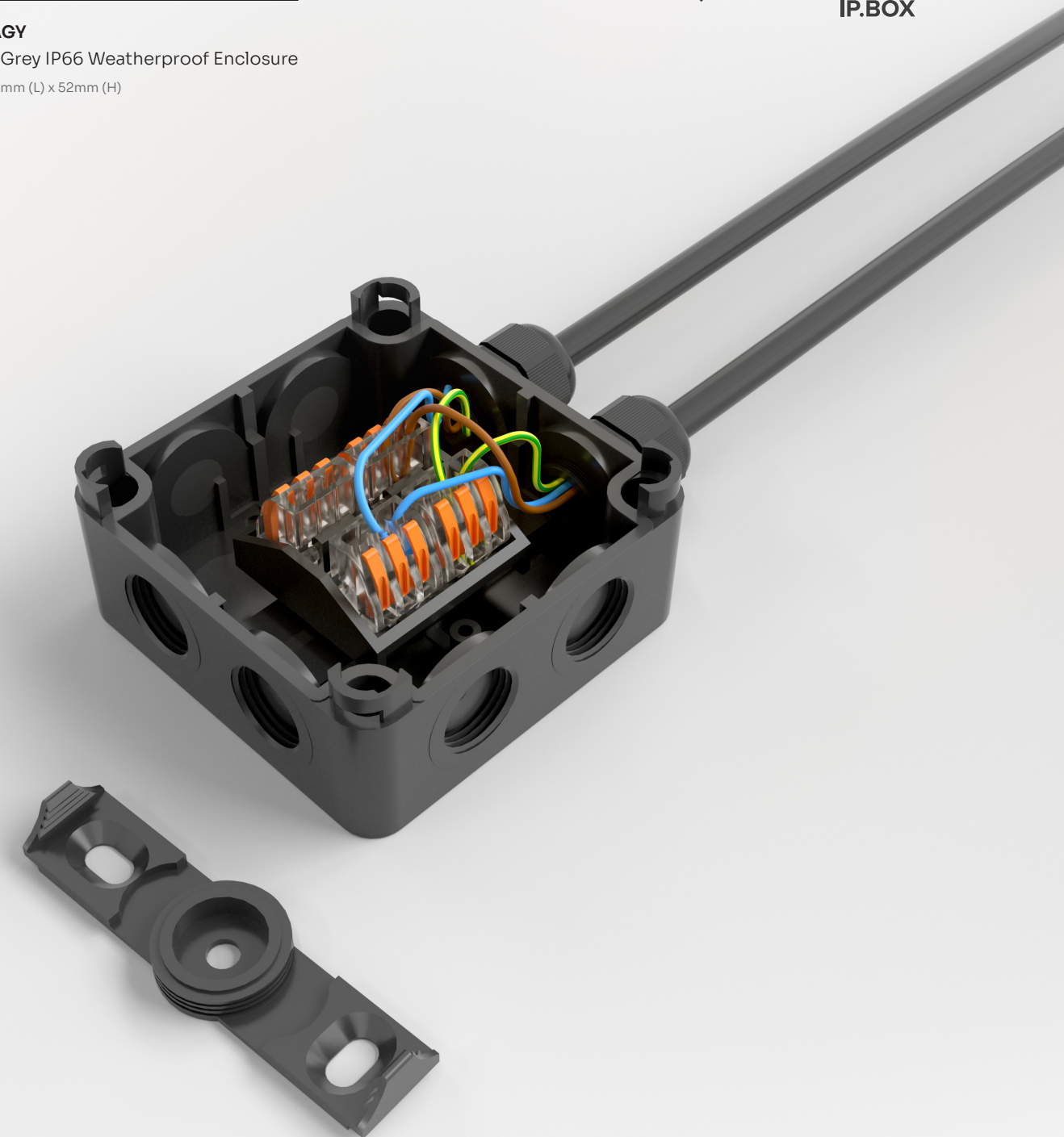
85mm (W) x 85mm (L) x 52mm (H)

## QOE8553AGY

Anthracite Grey IP66 Weatherproof Enclosure

85mm (W) x 85mm (L) x 52mm (H)

**Q-NECT**  
IP.BOX



## Multiple Fixing Options

The IP Box gives you the option to fix directly to a wall using 4 screws into the pre-moulded holes in the base. Or use the detachable wall clip which requires just 2 screws.

## Up to 8 M20 Glands

Our Junction Box gives you the option of using up to 8 M20 cable glands. The M20 threaded entries with membrane ensure the IP rating is maintained without the use of tools or locknuts.



# 2 & 3 Way IP Connection Boxes

## Hinged Lid & Wall Mountable

To aid installation, the hinged lid enables quick and easy access with suitable fixing points provided, allowing you to fix the Connection Box wherever is best suited.



## Pre-fitted Glands

Both of our IP rated Connection Boxes come pre-installed with IP rated nylon glands. The nylon glands provide a dust and watertight seal, excellent strain relief and cable protection.



### QOE8342BLK

4 Pole 2 Way 24A IP68 Inline Connection Box  
68mm (W) x 141mm (L) x 37mm (H)

### QOE8343BLK

4 Pole 3 Way 24A IP68 (M16+M20) Connection Box  
88mm (W) x 141mm (L) x 37mm (H)

### QOE5232BLK

3 Pole 2 Way 16A IP66 Connection Box  
35.5mm (W) x 52mm (L) x 26mm (H)



## IP68 4 Pole Connection Box

The IP68 Connection Box prevents exposure with a great sealing performance. It can withstand dust, dirt and sand, making it perfect for multiple installations.

## IP66 3 Pole Connection Box

The more compact IP66 Connection Box is also resistant against dust, dirt and sand. With the weatherproof seal the Connection Box is also protected against direct high pressure jets.

# 5 Pole, 3 Way IP68 'T' & Inline Connectors



## Tough Nylon Body

High quality and robust materials help ensure the connectors withstand the harshest of environments. Whatever the installation, your cables will be fully secure.

## 5 Pole Terminals

The 'T' and Inline Connectors are supplied with 5 pole terminals. This provides the installer with a variety of wiring options, covering a large range of installations.

**QOE3052BLK**  
5 Pole 2 Way 24A IP68 Inline Connector  
112mm (W) x 32mm (L) x 32mm (H)

---

**QOE3053BLK**  
5 Pole 3 Way 24A IP68 T-Connector  
106mm (W) x 98mm (L) x 32mm (H)



## IP68 'T' Connector

The 'T' shape connector facilitates the install of an inline switch or additional powered output whilst also offering IP68 weatherproof protection, making it perfect for multiple installations.

## IP68 Inline Connector

A quick and simple solution for outdoor and underwater fixtures. Suitable for extending or repairing existing cables while maintaining its IP68 weatherproof protection.



More from  
Unicrimp...

UNICRIMP®

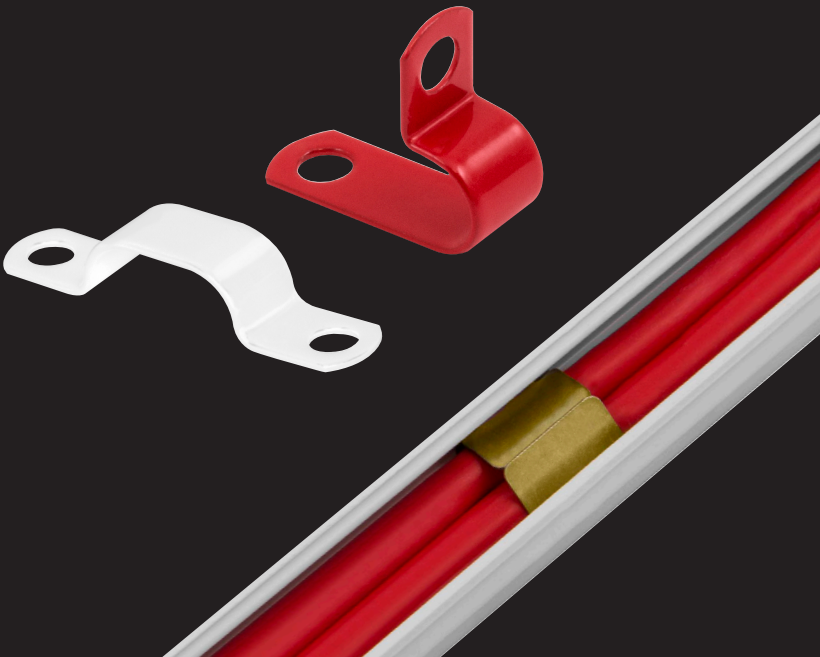
Q-CRIMP®

Explore our extensive range of cable management consumables. All our products are manufactured under stringent quality control systems and are fully compliant with the very latest industry regulations.



Q-FIRE

Don't get caught out by the latest regs! Explore our range of fire rated products and prevent cables from premature collapse during a fire and keep emergency services and the public safe.



The No.1 hybrid sealant and adhesive. OB1 bonds and seals a range of materials, works in damp conditions and even under water. User-friendly, hybrid polymer formulation for the ultimate in bonding and sealing.



Scolmore® GROUP

Do more with Scolmore Group. Providing simple, powerful and reliable solutions, helping you complete your installation. Visit any of the Scolmore Group brands to find out more.





United Kingdom

**UNICRIMP®**

Scolmore House, Mariner  
Lichfield Road Industrial Estate,  
Tamworth, Staffordshire,B79 7UL

T: +44 (0)1827 300 600  
E: [sales@unicrimp.com](mailto:sales@unicrimp.com)  
[www.unicrimp.com](http://www.unicrimp.com)



Southern Ireland

**CLICK® Litehouse**

18 Corrig Road,  
Sandyford Industrial Estate,  
Dublin, D18 WV79, Ireland

T: +353 (1) 2811 122  
E: [sales@clicklighthouse.ie](mailto:sales@clicklighthouse.ie)  
[www.clicklighthouse.ie](http://www.clicklighthouse.ie)

